



a Geberit company

2100 South Clearwater Drive
Des Plaines, IL 60018
Phone: 847-803-5000
Fax: 847-803-5454
www.chicagofaucets.com

REPAIR PARTS

BY: SID DATE: 07-28-14

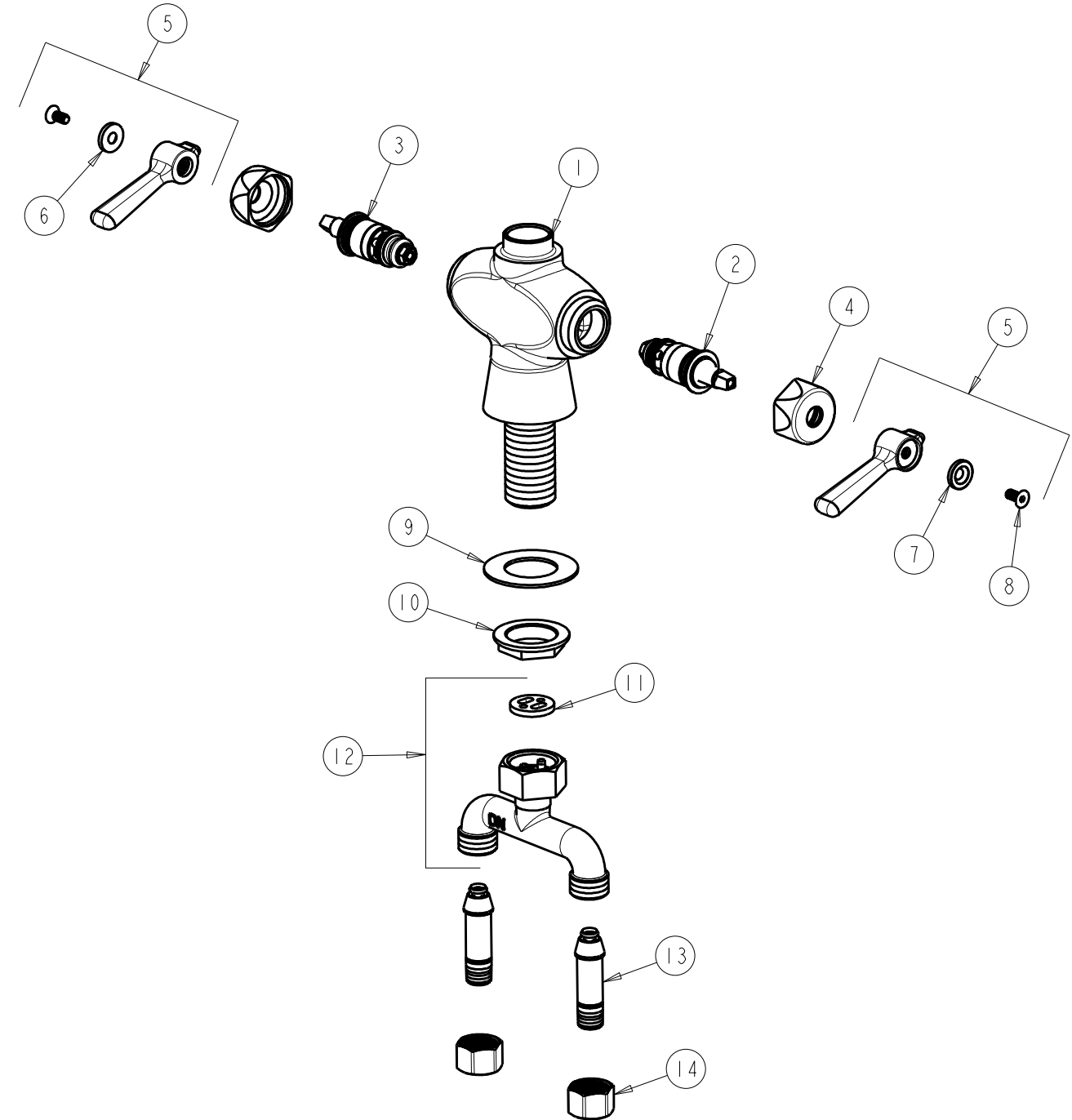
CHK: *[Signature]* REV:

FITTING NO.

919-VOAB

SUBMITTED MODEL NO.

ITEM NO.



ITEM	PART NO.	DESCRIPTION	ITEM	PART NO.	DESCRIPTION
1	-----	VALVE BODY (NOT SOLD SEPARATELY)	8	420-020JKNF	SCREW, 1/8 FLAT HEX HEAD X 1/2
2	1-099XTJKABNF	QUATURN CARTRIDGE (RH)	9	50-014JKNF	STEEL WASHER
3	1-100XTJKABNF	QUATURN CARTRIDGE (LH)	10	50-003JKRBF	LOCKNUT
4	444-005JKCP	CAP	11	50-008JKABNF	RUBBER WASHER
5	369-PRJKCP	HANDLE, 2-3/8 LEVER (PAIR)	12	50-010KJKABRBF	TEE CONNECTION ASSEMBLY
6	633-023JKNF	INDEX BUTTON (RED)	13	58-018KJKABRBF	TAIL PIECE ASSEMBLY
7	633-123JKNF	INDEX BUTTON (BLUE)	14	49-005JKRBF	COUPLING NUT