



ARCHITECTURAL/ENGINEERING SPECIFICATION

Exposed, quiet piston-type, chrome-plated flushometer valve with a polished exterior. Complete with chloramine resistant, filtered piston kit. The valve incorporates a hardwired 7.6VDC solenoid actuator, automatic sensor with manual override push button, and robust vandal resistant metal cover with 10 degree angled sensor.

PRODUCT FEATURES

- Proprietary dezincification resistant low lead brass alloy
- Control stop has internal siphon-guard protection and vandal resistant stop cap, sweat solder kit, wall flange with set screw
- High back pressure vacuum breaker with one piece hex coupling nut
- Chloramine resistant internal seals
- Adjustable tailpiece
- Spud coupling and flange for top spud connection
- Includes 10' power supply cable

COMPLIANCE AND CERTIFICATION

- Complies with ASSE-1037 / ASME A112.1037 / CSA B125.37
- ADA Compliant- Operational Controls



This product should be used with a WaterSense labeled counterpart with a compatible flush volume to ensure that the entire system meets the requirements for water efficiency and performance.

WHEN INSTALLING IN A HANDICAP STALL

Per the ADA Guidelines (section 604.9.4) it is recommended that the grab bars be split or shifted to the wide side of the stall. If grab bars must be present over the valve, use the alternate ADA installation as shown on next page.



FLOW OPTIONS

	FLUSH VOLUME GPF	DUAL FLUSH GPF	WATERSENSE COMPLIANT
-ONE	1.1		✓
-EV	1.28		✓
-WS1	1.6	1.6/1.1	

SUFFIX OPTIONS

- DF Dual Flush (See Chart Above)
- FM12 Floor Mount 12" Rough In
- LL 10 Year Long Life Battery
- YJ Split Ring Pipe Support
- YK Solid Ring Pipe Support

VALVE HEIGHT OPTIONS

	DIMENSION A INCH [MM]
-STANDARD	11 1/2" [292]
-1	16" [406]

ACCESSORIES (ORDER SEPARATE AS SPECIFIED)

- P6900-ACA 7.5VDC Plug-In ACA Power Supply
Powers up to 4 valves
- P6000-HW6 7.6VDC Hardwired Power Converter
Powers up to 8 valves

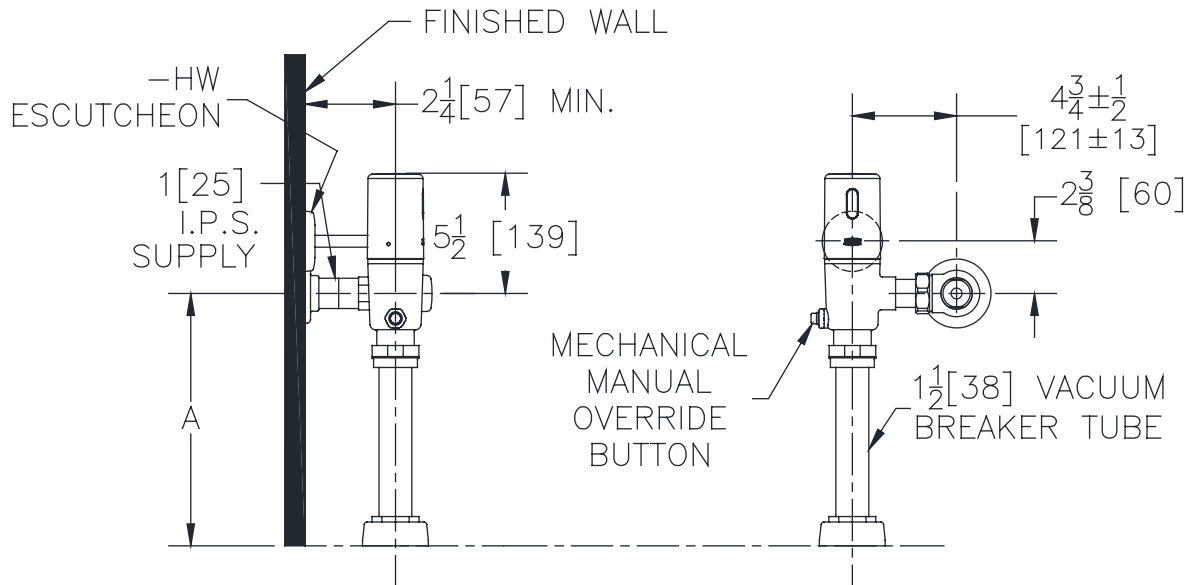
OTHERS

- P6800-PJB-4 Power Junction Box (4 outputs)
- P6800-PJB-8 Power Junction Box (8 outputs)
- P6800-EXT 10' Extension Cable with Connectors

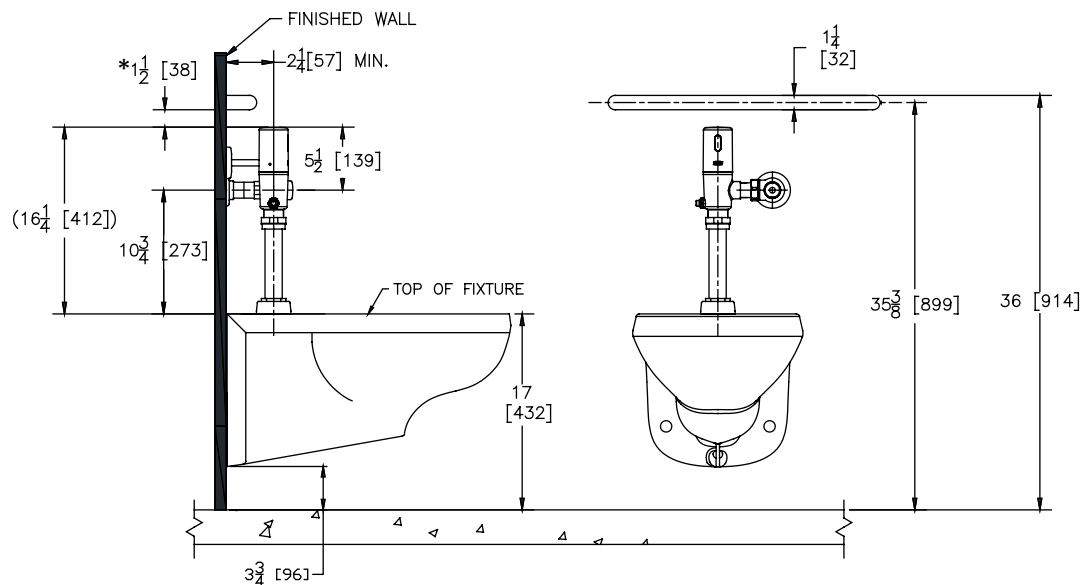
ARCHITECTURAL & ENGINEERING APPROVAL

The information contained in this document is subject to change without notice.
Please contact Zurn for most up to date information.

Rough-in dimensions/Overview dimensions



Alternate ADA Installation



- Water supply rough-in to 10 3/4" (minimum) with grab bar at 36".
- ADA compliance met using 1 1/4" grab bar as shown.
- *ADA compliant minimum gap between wall and grab bar 1 1/2".
- Does not meet California ADA compliance for grab bar height. (33" grab bar centerline required)