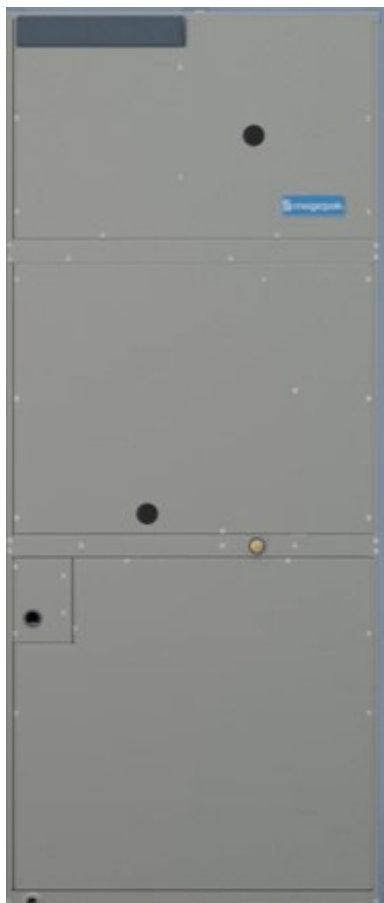


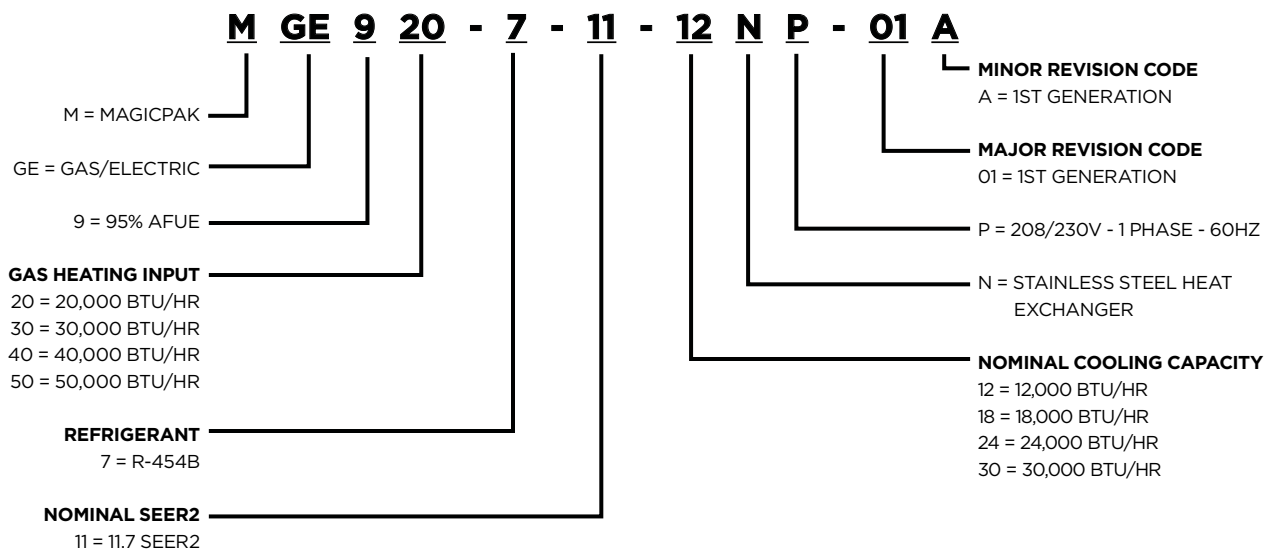
ELECTRIC COOLING/  
GAS HEATING  
PACKAGED UNIT



FORM NO. MGE9-100 (09/2025)



## MODEL NUMBER GUIDE



## CONTENTS

<b>APPLICATIONS .....</b>	<b>3</b>
<b>UNIT APPROVALS .....</b>	<b>3</b>
<b>WARRANTY .....</b>	<b>3</b>
<b>STANDARD FEATURES .....</b>	<b>3</b>
<b>OPTIONS &amp; ACCESSORIES .....</b>	<b>5</b>
FIELD-INSTALLED ACCESSORIES.....	5
<b>UNIT ELECTRICAL AND PHYSICAL DATA .....</b>	<b>6</b>
<b>UNIT DIMENSIONS (IN.) .....</b>	<b>7</b>
<b>MINIMUM CLEARANCES.....</b>	<b>8</b>
<b>OUTDOOR SOUND RATING &amp; CABINET AIR LEAKAGE .....</b>	<b>9</b>
<b>FACTORY FILTER SIZE (IN.) AND PRESSURE DROP (IN. W.C.).....</b>	<b>9</b>
<b>SCCR ACCESSORY .....</b>	<b>9</b>
<b>HIGH ALTITUDE APPLICATION DATA .....</b>	<b>9</b>
<b>LP CONVERSION KIT .....</b>	<b>9</b>
<b>WALL SLEEVES &amp; LOUVERS.....</b>	<b>10</b>
<b>RATED COOLING &amp; HEATING PERFORMANCE.....</b>	<b>11</b>
<b>EXTENDED COOLING PERFORMANCE DATA.....</b>	<b>12</b>
<b>BLOWER PERFORMANCE .....</b>	<b>13</b>

## APPLICATIONS

- MagicPak units are designed for use in all multifamily applications, such as: apartments, condominiums, student housing and senior living
- Installation in conditioned and non-conditioned mechanical spaces
- Units are approved for installations up to 5,500 ft. without any modifications or adjustments
- For installations above 5,500 ft., refer to High Altitude Application Data table and installation instructions for additional details
- Must be ducted air supply and return to the unit
  - No free air supply or return is allowed

## UNIT APPROVALS

### ETL (INTERTEK)

- Design certified by Intertek (ETL) to latest edition of UL 60335-2-40
- Certified as a direct vent appliance in accordance with ANSI Z21.47:21 / CSA 2.3:21
- Certified for less than 2% cabinet air leakage in accordance ASHRAE Standard 193-2010
- Rated with a 5kA Short Circuit Current Rating (SCCR) in accordance with RMS Symmetrical per UL 508A

### AHRI/DOE

- Certified to AHRI Standard 210/240-2023; refer to the AHRI Directory for AHRI certificates
- Cooling and heating system rated in accordance with Department of Energy (DOE) and NRCan test procedures (latest edition)
- System rated in accordance with Federal Trade Commission (FTC) labeling regulations

### SOUND RATING

- Outdoor sound level measurements tested per ANSI/AHRI Standard 270
- Refer to Outdoor Sound Rating & Cabinet Air Leakage table for additional details

### ALUMINUM LOUVER ACCESSORY - PAINT SPECS

- Standard and impact-resistant louvers meet AAMA 2605 specifications

## WARRANTY

### COMPRESSOR

- Five (5) years limited parts warranty

### HEAT EXCHANGER

- Twenty (20) years limited parts warranty on stainless steel heat exchanger

### ALL OTHER COVERED COMPONENTS

- Refer to Equipment Limited Warranty for additional details

## STANDARD FEATURES

### ELECTRICAL CONNECTIONS & GAUGE PORTS

- Line voltage knockouts (two concentric) to accommodate field required wire size
- Thermostat connections are located at the top of the cabinet
- Two refrigeration gauge ports are located within the lower compartment of the unit
- Refer to Unit Dimension figure for additional details
- Refer to Unit Electrical and Physical Data table for additional details

### CABINET

- Embossed galvanized steel cabinet
- Indoor section of the cabinet insulated with 0.5 in. dual density fiberglass insulation
- Outdoor section of the cabinet insulated with 0.5 in. weather-resistant polystyrene insulation

### INTERNAL FILTER

- Tool-less filter access
- Factory-installed 1 in. filter rack with washable filter
- Field-supplied filters up to MERV 6 can be installed in the filter slot internal to unit in lieu of washable filter, when proper duct design is applied
- If a higher resistance filter is field installed in the unit, the added resistance must be included in the external static pressure and must not exceed 0.5 in. w.c. including ductwork
- Refer to Factory Filter Size and Pressure Drop and Blower Performance tables for additional details

**REFRIGERATION SYSTEM**

- Factory charged with R-454B refrigerant
- Factory sealed and tested
- Refrigerant Detection System (RDS) in units charged with refrigerant greater than or equal to 64oz

**NOTE:** RDS kit available for units below 64oz refrigerant charge; see Field-Installed Accessories

**Indoor and Outdoor Coils**

- Copper tube with aluminum fin coils

**High Pressure Switch**

- Shuts off unit if abnormal operating conditions cause the refrigerant liquid pressure to rise above acceptable levels

**Low Pressure Switch**

- Provides loss of charge protection by shutting off unit if refrigerant suction pressure falls below acceptable levels

**TRANSFORMER**

- Rated for 40VA
- Factory wired for 230/240V power supply, and includes field selectable terminal for 208V
- Converts line voltage to 24V for the thermostat and control circuits within the unit

**COMBUSTION AIR INDUCER**

- Composite inducer housing and wheel for condensate management and corrosion resistance
- Pests are discouraged from nesting in the unit's flue pipe during summer months by briefly energizing the gas furnace inducer blower at the beginning of each cooling cycle

**SUPPLY AIR BLOWER****Constant Torque ECM Blower Motor**

- Motor provides specified air volume at 0.1 in. - 0.5 in. w.c. external static pressure
- Blower assembly is easily removed for servicing
- Refer to Blower Performance tables for additional details

**Electronic Blower Control**

- Dedicated blower speed taps for continuous fan, cooling, and heating operation are programmed for optimal airflow and controlled by 24V thermostat signals
- Blower speed adjustment is easily accomplished by speed tap selection
- Fixed blower delays have been selected to enhance comfort
- Refer to Blower Performance tables for additional details

**OUTDOOR FAN**

- Heavy duty and weatherproof
- Aluminum fan blades

**CONDENSATE MANAGEMENT****Primary Drain Pan**

- Antimicrobial protection: drain pan is injected with an antibacterial agent that destabilizes the membrane of microorganism cells, disrupting the cellular function of odor-causing mold and bacteria so that they can no longer grow or reproduce

**Overflow Protection**

- Indoor drain pan overflow protection switch monitors the condensate level in primary drain pan
- Prevents unit from running if water is sensed

**Secondary Drain Pan**

- Composite wall sleeve base is specifically designed to direct rain water out of the building and in the event of any restriction in the primary drain will act as a redundant overflow protection

**GAS HEATING SYSTEM**

- 95% AFUE rating on all models
- Stainless steel primary heat exchanger
- Stainless steel secondary heat exchanger
- Two-Stage operation for improved comfort and efficiency
- Sealed burner box for quiet operation that isolates outdoor combustion air for improved cold climate reliability
- Ball-bearing composite housing inducer for operation in extreme cold weather
- Patent pending telescoping field adjustable vent pipe for varying wall thickness
- Telescoping vent pipe with accelerator tip to prevent ice accumulation
- Condensate Management system with Patented Freeze Shield Technology™. Condensate trap designed to operate in extreme conditions

## OPTIONS & ACCESSORIES

### FIELD-INSTALLED ACCESSORIES

#### REFRIGERANT DETECTION SYSTEM KIT (RDS)

- For units below 64oz refrigerant charge (if required by local and/or state codes)
- Includes control board, harness, leakage sensor, and sensor bracket

#### WALL SLEEVES & LOUVERS

- Units must be installed with approved wall sleeve and louver accessories for safe operation and are required for all installations

**NOTE:** Polypropylene louvers (ALVRP\*\*\*MGE) should **not** be oversized

- Refer to Wall Sleeves and Louvers table for additional details

#### WALL SLEEVES (ASLEEVE)

- Penetrates the building envelope and creates a path for condenser air intake and exhaust
- Provides a sealed connection to the unit and a secure attachment foundation for the louvers
- Available in 6 in. to 12 in. depths

#### WALL SLEEVE EXTENSION (ASLEEVEEXT4)

- Provides an additional 4 in. of depth to the wall sleeve, for a maximum depth of 16 in.

### LOUVERS

#### Polypropylene Louvers (ALVRP\*\*\*MGE)

- Constructed from durable, corrosion-resistant plastic
- Available in four standard colors

#### Aluminum Louvers (ALVRAL)

- Constructed with 6063-T6 grade aluminum
- Available in anodized clear coat, primer (to be painted in the field), standard paint colors and custom colors with paint matching\*

#### Impact-Resistant Aluminum Louvers (ALVRALC)

- Impact and wind load certified up to 186 MPH, risk categories III and IV, and wind exposures C and D
  - ALVRALC-1 & ALVRALC-2: FBC Notice of Acceptance (NOA) 20-0909.03
  - ALVRALC-3, -4 & -7: FBC Notice of Acceptance (NOA) 21-1216.11
- Constructed with 6063-T6 grade aluminum
- Available in anodized clear coat, primer (to be painted in the field), standard paint colors and custom colors with paint matching\*

#### LIQUID PROPANE (LP) CONVERSION KIT (ALPKT\*)

- Enables simple conversion from natural gas to liquid propane
- Refer to LP Conversion Kit table for additional details

#### SHORT CIRCUIT CURRENT RATING KIT (ASCCR)

- Provides 200kA of SCCR protection
- Refer to SCCR Accessory table for additional details

#### FILTERS

- Field-supplied filters up to MERV 6 can typically be installed in the filter slot internal to unit

**NOTE:** Use of paper frame **not** recommended

#### THERMOSTAT

- Required for all installations (field-supplied)
- Units are individually controlled with conventional 24V thermostat
- One-stage Cool/Two-stage gas Heat

\* Certain exclusions apply. Refer to louver manufacturer's literature and warranty documentation.

**UNIT ELECTRICAL AND PHYSICAL DATA (208/230 Volt - 1 Phase - 60HZ)<sup>1</sup>**

Model	MCA <sup>2</sup>		MOCP <sup>3</sup>		Default SCCR (kA) <sup>4</sup>	Compressor		Outdoor Fan				Indoor Blower			Approx		R454B Charge (OZ.)	R454B Charge (LBS.)	R454B Charge (KG.)
	208V	230V	208V	230V		Rated Load Amps (RLA)	Locked Rotor Amps (LRA)	Dia. (in)	Nominal RPM	Full Load Amps (FLA)	Rated HP	Wheel D x W (in.)	Full Load Amps (FLA)	Rated HP	(LBS)	(KG)			
MGE920-7-11-12NP-01A	8.3	8.3	15	15	5	5.4	26.4	18	1025	0.9	1/8	11 x 7	0.6	1/3	300	136	49.0	3.1	1.4
MGE930-7-11-12NP-01A																			
MGE920-7-11-18NP-01A	10.6	10.6	15	15	5	6.8	32.7	18	1025	0.9	1/8	11 x 7	1.2	1/3	320	145	59.0	3.7	1.7
MGE930-7-11-18NP-01A																			
MGE930-7-11-24NP-01A	15.7	15.7	25	25	5	10.2	41.2	18	1050	0.9	1/8	11 x 7	2.0	1/3	327	149	59.0	3.7	1.7
MGE940-7-11-24NP-01A																			
MGE950-7-11-24NP-01A																			
MGE930-7-11-30NP-01A	22.5	22.5	35	35	5	14.1	75.6	18	1100	2.8	1/3	11 x 7	2.1	1/2	365	166	72.0	4.5	2.0
MGE940-7-11-30NP-01A																			
MGE950-7-11-30NP-01A																			

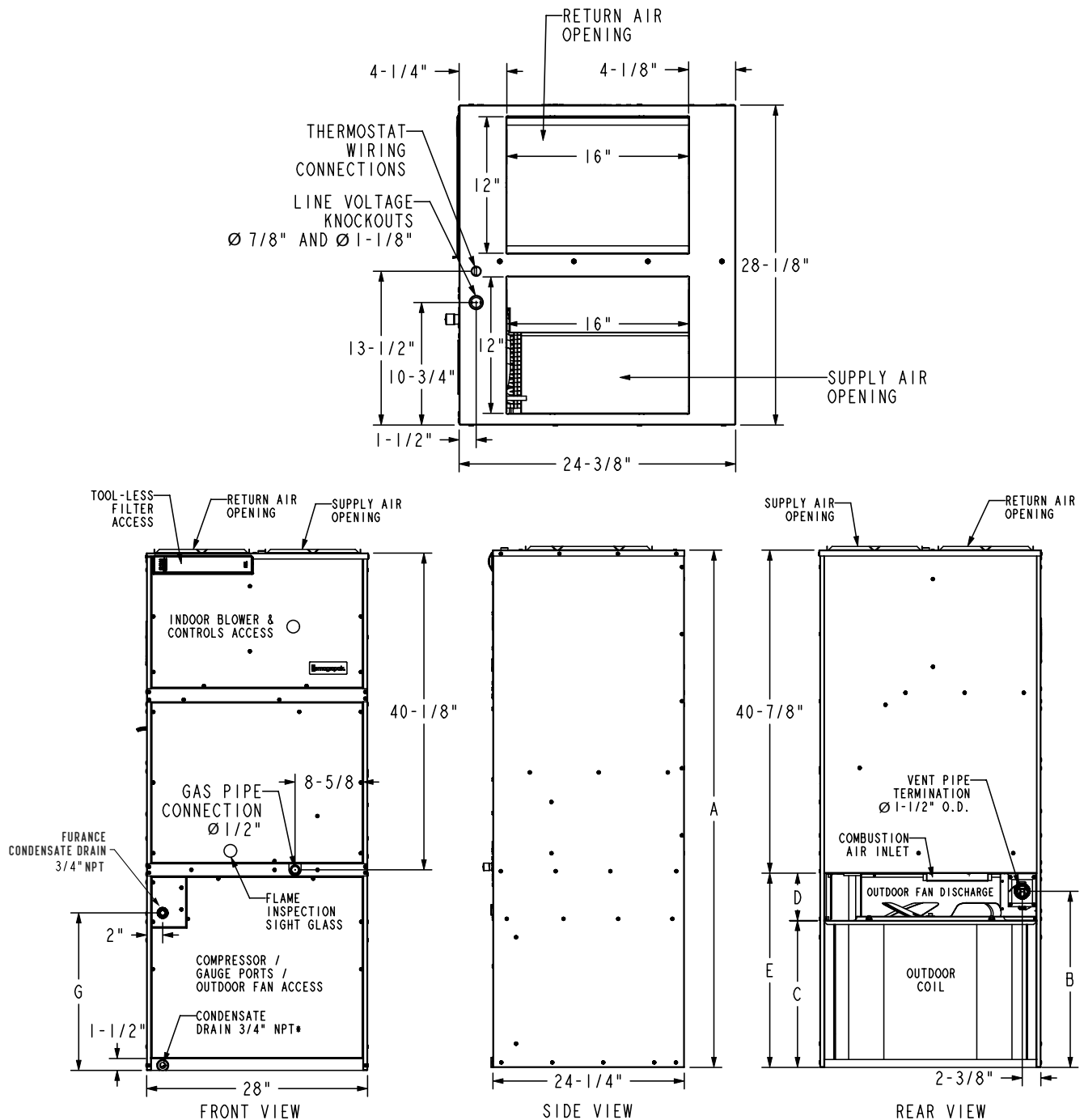
<sup>1</sup> Acceptable voltage range: 197 - 253V<sup>2</sup> MCA = Minimum Circuit Ampacity<sup>3</sup> MOCP = Maximum Over Current Protection<sup>4</sup> SCCR = Short Circuit Current Rating; refer to SCCR Accessory table, up to 200kA**DESIGN OPERATING CONDITIONS**

Cooling Operating Conditions	
Outdoor Ambient Air Temperature °F	
Minimum DB	Maximum DB
65	115
Indoor Ambient Air Temperature °F	
Minimum DB	Maximum DB
62/57	90/72

Heating Operating Conditions	
Outdoor Ambient Air Temperature °F	
Minimum DB	Maximum DB
-25	75
Indoor Ambient Air Temperature °F	
Minimum DB	Maximum DB
50	80

## UNIT DIMENSIONS (IN.)

MODEL	A	B	C	D	E	G
MGE920-7-11-12NP-01A	65-1/2"	22-5/16"	18-5/8"	6"	24-5/8"	20"
MGE930-7-11-12NP-01A						
MGE920-7-11-18NP-01A	67-1/2"	24-5/16"	20-5/8"		26-5/8"	22"
MGE930-7-11-18NP-01A						
MGE930-7-11-24NP-01A						
MGE940-7-11-24NP-01A						
MGE950-7-11-24NP-01A						
MGE930-7-13-30NP-01A	71-1/2"	28-5/16"	24-5/8"		30-5/8"	26"
MGE940-7-13-30NP-01A						
MGE950-7-13-30NP-01A						



\* Provisions must be made to properly drain condensate from the drain pan and provisions must be made to properly drain furnace condensate from drain trap.

## MINIMUM CLEARANCES

### Accessibility Clearances

The front of the unit must be accessible for service. A minimum clearance of 30" in front of unit is required for service.

If the unit is enclosed, a door or access panel aligned with the front of the unit is the preferred method of providing access. The door or access panel opening must be a minimum of 30" wide (centered on the unit) and be as tall as the unit.

#### IMPORTANT

The unit must be installed with approved wall sleeve and louver accessories for safe operation. Improper installations could result in property damage, personal injury, or death.

### Supply Duct Clearances

Minimum Clearances to Combustible Materials <sup>1</sup>		
Front	Sides	Top
0"	0"	0"

<sup>1</sup> Accessibility clearances take precedence

### Unit Clearances

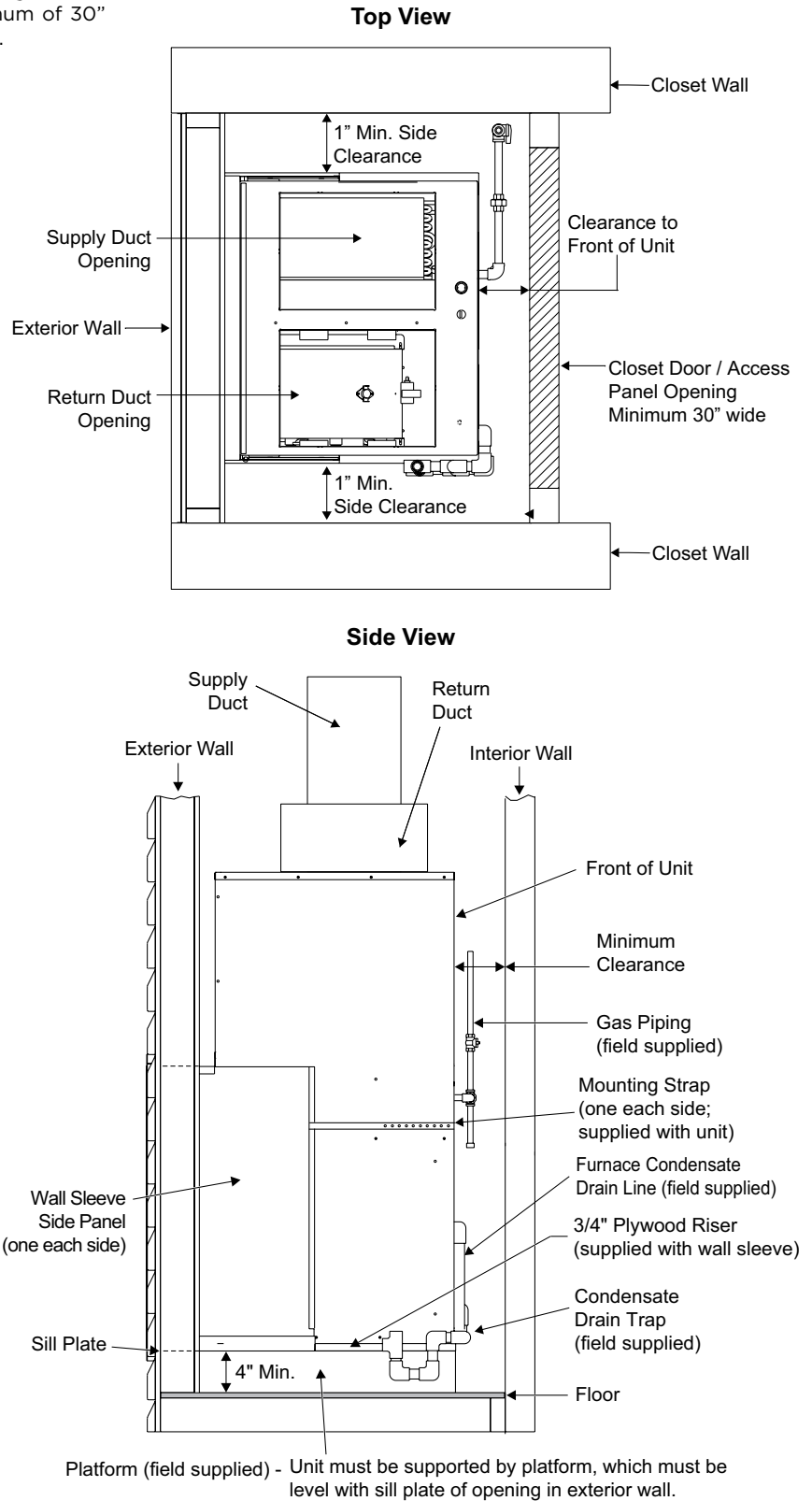
Minimum Clearances <sup>1</sup>	
Front <sup>2</sup>	Sides <sup>3</sup>
1"	1"

<sup>1</sup> Accessibility clearances take precedence

<sup>2</sup> Clearance must accommodate field-installed condensate drain line (heating and cooling) / drain trap and gas line

<sup>3</sup> Additional clearance required if field-installed condensate drain line (heating and cooling) / drain trap is routing alongside unit

NOTE: Consult local codes for other clearance requirements





## OUTDOOR SOUND RATING & CABINET AIR LEAKAGE

Model	Outdoor Sound Rating (dBA) <sup>1</sup>	Cabinet Air Leakage (%) <sup>2</sup>
MGE9**-7-11-12*P	75	2.0
MGE9**-7-11-18*P	75	1.4
MGE9**-7-11-24*P	75	1.4
MGE9**-7-11-30*P	76	1.4

<sup>1</sup> Per ANSI / AHRI Standard 270

<sup>2</sup> Per ASHRAE Standard 193

## REFRIGERANT DETECTION SYSTEM KIT (RDS)

Model	Kit
MGE9*-7-11-12*P	ARDSKTM
MGE9*-7-11-18*P	
MGE9*-7-11-24*P	

## FACTORY FILTER SIZE (IN.) AND PRESSURE DROP (IN. W.C.)

Model	Filter Size	Indoor Airflow (CFM)																	
		200	250	300	350	400	450	500	550	600	650	700	750	800	850	900	950	1000	1050
All	12 x 24 x 1 <sup>1</sup>	0.01	0.02	0.03	0.04	0.04	0.05	0.08	0.09	0.10	0.12	0.14	0.15	0.17	0.18	0.20	0.22	0.24	0.26

<sup>1</sup> Effective filter area 12 x 16.

If a higher resistance filter is field installed within the unit, the added resistance must be included as additional system static pressure.

## SCCR ACCESSORY

Model	Kit <sup>1</sup>
MGE9**-7-11-12*P	ASCCR1
MGE9**-7-11-18*P	
MGE9**-7-11-24*P	
MGE9**-7-11-30*P	ASCCR3

<sup>1</sup> Per UL 508A, 200kA RMS Symmetrical

## LP CONVERSION KIT

Model	Kit
MGE920-7-11-***P	ALPKT615
MGE930-7-11-***P	
MGE940-7-11-***P	
MGE950-7-11-***P	

## HIGH ALTITUDE APPLICATION DATA

Altitude	Natural Gas		LP Gas	
	Burner Orifices	Manifold Pressure	Burner Orifices LP Kit	Manifold Pressure
0-5,500 ft.	As shipped	3.5" w.c.	ALPKT615	10.0" w.c.
5,500 - 8,500 ft.		3.0" w.c.		8.0" w.c.
Above 8,500 ft.	Per National Fuel Gas Code	3.5" w.c.	Per National Fuel Gas Code	10.0" w.c.

## WALL SLEEVES & LOUVERS

Wall Sleeves		Louvers			Model				Dimensions (in.)			
Wall Sleeve	Wall Sleeve Extension	Polypropylene Louvers	Aluminum Louvers	Impact Louvers	MGE9**-7-11-12*P	MGE9**-7-11-18*P	MGE9**-7-11-24*P	MGE9**-7-11-30*P	Wall Sleeve Height (A)	Wall Opening		
										Height (B)	Depth (C)	
											Sleeve Only	Sleeve Plus Extension
ASLEEVE6-1	---	ALVRP***MGE-1	ALVRAL-1^	ALVRALC-1^	•	•	•		29	29-1/8	6	---
ASLEEVE8-1	---	ALVRP***MGE-1	ALVRAL-1^	ALVRALC-1^	•	•	•		29	29-1/8	8	---
ASLEEVE10-1	ASLEEVEEXT4-1	ALVRP***MGE-1	ALVRAL-1^	ALVRALC-1^	•	•	•		29	29-1/8	10	14
ASLEEVE12-1	ASLEEVEEXT4-1	ALVRP***MGE-1	ALVRAL-1^	ALVRALC-1^	•	•	•		29	29-1/8	12	16
ASLEEVE6-2	---	ALVRP***MGE-2	ALVRAL-2^	ALVRALC-2^				•	32-3/4	32-7/8	6	---
ASLEEVE8-2	---	ALVRP***MGE-2	ALVRAL-2^	ALVRALC-2^				•	32-3/4	32-7/8	8	---
ASLEEVE10-2	ASLEEVEEXT4-2	ALVRP***MGE-2	ALVRAL-2^	ALVRALC-2^				•	32-3/4	32-7/8	10	14
ASLEEVE12-2	ASLEEVEEXT4-2	ALVRP***MGE-2	ALVRAL-2^	ALVRALC-2^				•	32-3/4	32-7/8	12	16
ASLEEVE6-2	---	---	ALVRAL-7^	ALVRALC-7^	o	o	o		32-3/4	32-7/8	6	---
ASLEEVE8-2	---	---	ALVRAL-7^	ALVRALC-7^	o	o	o		32-3/4	32-7/8	8	---
ASLEEVE10-2	ASLEEVEEXT4-2	---	ALVRAL-7^	ALVRALC-7^	o	o	o		32-3/4	32-7/8	10	14
ASLEEVE12-2	ASLEEVEEXT4-2	---	ALVRAL-7^	ALVRALC-7^	o	o	o		32-3/4	32-7/8	12	16
ASLEEVE6-5	---	---	ALVRAL-3^	ALVRALC-3^	o	o	o		45	45-1/8	6	---
ASLEEVE8-5	---	---	ALVRAL-3^	ALVRALC-3^	o	o	o		45	45-1/8	8	---
ASLEEVE10-5	ASLEEVEEXT4-3	---	ALVRAL-3^	ALVRALC-3^	o	o	o		45	45-1/8	10	14
ASLEEVE12-5	ASLEEVEEXT4-3	---	ALVRAL-3^	ALVRALC-3^	o	o	o		45	45-1/8	12	16
ASLEEVE6-5	---	ALVRP***MGE-3							45	45-1/8	6	---
ASLEEVE8-5	---	ALVRP***MGE-3							45	45-1/8	8	---
ASLEEVE10-5	ASLEEVEEXT4-3	ALVRP***MGE-3							45	45-1/8	10	14
ASLEEVE12-5	ASLEEVEEXT4-3	ALVRP***MGE-3							45	45-1/8	12	16
ASLEEVE6-5	---	---	ALVRAL-4^	ALVRALC-4^				o	45	45-1/8	6	---
ASLEEVE8-5	---	---	ALVRAL-4^	ALVRALC-4^				o	45	45-1/8	8	---
ASLEEVE10-5	ASLEEVEEXT4-3	---	ALVRAL-4^	ALVRALC-4^				o	45	45-1/8	10	14
ASLEEVE12-5	ASLEEVEEXT4-3	---	ALVRAL-4^	ALVRALC-4^				o	45	45-1/8	12	16

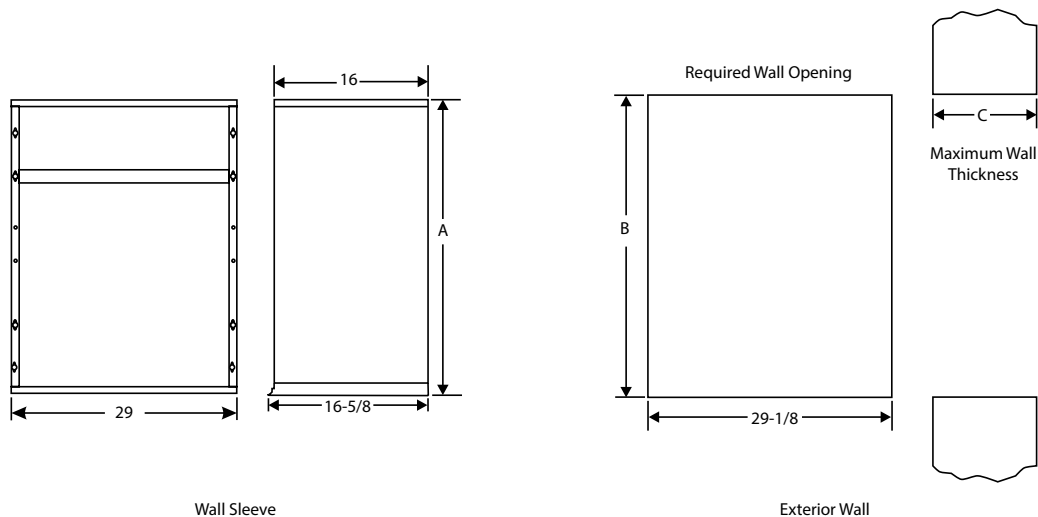
\*\*\* Louver colors: WHT = white, SAN = sandstone, BGE = beige, TPST = taupestone

^ -P: Option to paint standard, aluminum, and impact-resistant louver

o Optional: Wall sleeves and louvers can be oversized to maintain a uniform appearance

NOTE: ALVRP\*\*\*MGE louvers may not be oversized due to vent pipe and metal grate insert location

## WALL SLEEVE & WALL OPENING DIMENSIONS (IN.)



## RATED COOLING & HEATING PERFORMANCE

Tonnage	Model	Cooling			Gas Heating			
		Net Capacity (Btu/hr)	Efficiency	S/T^	Input (Btu/hr)	Output (Btu/hr)	Rise Range (F°)	Efficiency AFUE (%)
			SEER2/EER2					
1.0	MGE920-7-11-12*	12,000	11.7/10.5	0.75	20,000 (15,000)	19,000 (14,250)	25 - 55 (15 - 45)	95
	MGE930-7-11-12*				30,000 (22,500)	28,500 (21,375)	25 - 55 (15 - 45)	
1.5	MGE920-7-11-18*	16,900	11.7/10.0	0.79	20,000 (15,000)	19,000 (14,250)	25 - 55 (15 - 45)	95
	MGE930-7-11-18*				30,000 (22,500)	28,500 (21,375)	25 - 55 (15 - 45)	
2.0	MGE930-7-11-24*	21,800	11.7/10.0	0.79	30,000 (22,500)	28,500 (21,375)	25 - 55 (15 - 45)	95
	MGE940-7-11-24*				40,000 (30,000)	38,000 (28,500)	25 - 55 (15 - 45)	
	MGE950-7-11-24*				50,000 (37,500)	47,500 (35,625)	25 - 55 (20 - 50)	
2.5	MGE930-7-11-30*	27,600	11.7/10.0	0.75	30,000 (22,500)	28,500 (21,375)	25 - 55 (15 - 45)	95
	MGE940-7-11-30*				40,000 (30,000)	38,000 (28,500)	25 - 55 (15 - 45)	
	MGE950-7-11-30*				50,000 (37,500)	47,500 (35,625)	25 - 55 (20 - 50)	

\* Not a rated value

S/T = ratio of sensible to total cooling load

For most up to date ratings and values, please view AHRI listing (Low Fire)

## EXTENDED COOLING PERFORMANCE DATA

Tonnage	Model	Indoor Temp DB/WB (°F)	Outdoor Temperature - DB (°F)														
			65			85			95			105			115		
			Net Capacity (Btu/hr)	S/T	System Power Input (kW)	Net Capacity (Btu/hr)	S/T	System Power Input (kW)	Net Capacity (Btu/hr)	S/T	System Power Input (kW)	Net Capacity (Btu/hr)	S/T	System Power Input (kW)	Net Capacity (Btu/hr)	S/T	System Power Input (kW)
1.0	MGE9**-7-11-12*P	85/72	14410	0.60	0.92	14370	0.63	1.07	14070	0.66	1.17	13650	0.69	1.29	12700	0.73	1.41
		80/67	13870	0.67	0.91	13600	0.71	1.07	13070	0.74	1.17	12430	0.78	1.28	11420	0.82	1.40
		75/63	13200	0.70	0.91	12940	0.75	1.07	12350	0.78	1.17	11490	0.81	1.28	10320	0.86	1.39
		75/57	12460	1.00	0.91	12220	1.00	1.08	11580	1.00	1.17	11120	1.00	1.27	9720	1.00	1.39
1.5	MGE9**-7-11-18*P	85/72	18750	0.60	1.18	18550	0.65	1.41	18790	0.68	1.54	17890	0.71	1.70	16980	0.75	1.86
		80/67	17950	0.67	1.18	17810	0.74	1.41	17780	0.76	1.55	16730	0.81	1.70	15220	0.85	1.86
		75/63	17290	0.71	1.18	16990	0.78	1.41	16500	0.81	1.54	15260	0.84	1.69	13870	0.88	1.85
		75/57	16510	1.00	1.17	16180	1.00	1.41	15640	1.00	1.53	14360	1.00	1.68	13430	1.00	1.84
2.0	MGE9**-7-11-24*P	85/72	25380	0.61	1.56	25340	0.67	1.91	23830	0.69	2.10	22700	0.73	2.32	20680	0.77	2.54
		80/67	24390	0.69	1.56	23680	0.75	1.90	22220	0.78	2.09	20660	0.84	2.30	18770	0.88	2.52
		75/63	23420	0.72	1.56	22290	0.80	1.90	20670	0.82	2.08	19180	0.86	2.29	17230	0.91	2.50
		75/57	22640	1.00	1.56	21470	1.00	1.90	19380	1.00	2.08	18410	1.00	2.28	16520	1.00	2.50
2.5	MGE9**-7-11-30*P	85/72	31500	0.65	2.03	30160	0.66	2.42	29590	0.67	2.66	28530	0.69	2.92	26520	0.70	3.23
		80/67	29540	0.70	2.00	28960	0.72	2.41	28100	0.74	2.63	26950	0.77	2.91	24040	0.78	3.21
		75/63	28320	0.72	2.00	27690	0.76	2.40	26630	0.78	2.63	25140	0.81	2.90	22580	0.83	3.19
		75/57	27190	1.00	2.00	26650	1.00	2.39	24850	1.00	2.63	24230	1.00	2.89	22360	1.00	3.17

NOTE: Values based on 0.3" w.c. external static pressure

## BLOWER PERFORMANCE

- Performance based on factory-provided washable filter installed in the unit.
- If a higher resistance filter is field installed in the unit, the added resistance must be included in the external static pressure and must not exceed 0.5 in. w.c. including ductwork.
- Refer to Factory Filter Size and Pressure Drop table for additional details.

				SUPPLY AIRFLOW PERFORMANCE AS A FUNCTION OF EXTERNAL STATIC PRESSURE															
Tonnage	Model	Gas Heating		Indoor Blower Speed	0.1" w.c.			0.2" w.c.			0.3" w.c.			0.4" w.c.			0.5" w.c.		
		Rise Range (F°)	Mid Rise (F°)		SCFM	Watts	Temp Rise	SCFM	Watts	Temp Rise	SCFM	Watts	Temp Rise	SCFM	Watts	Temp Rise	SCFM	Watts	Temp Rise
1.0	MGE920-7-11-12NP	25 - 55 (15 - 45)	40 (30)	TAP 1 (FAN)	380	55	---	330	58	---	280	60	---	230	63	---	---	---	---
				TAP 2 (COOL)	490	80	---	450	84	---	410	87	---	365	89	---	320	92	---
				TAP 3 (COOL)†	520	91	---	480	94	---	440	97	---	405	100	---	365	103	---
				TAP 4 (HEAT)*	425	65	41	380	68	46	340	71	51.74	290	74	61	---	---	---
				TAP 5 (HEAT)#	425	65	31	380	68	35	340	71	38.81	290	74	45	---	---	---
	MGE930-7-11-12NP	25 - 55 (15 - 45)	40 (30)	TAP 1 (FAN)	380	55	---	330	58	---	280	60	---	230	63	---	---	---	---
				TAP 2 (COOL)	490	80	---	450	84	---	410	87	---	365	89	---	320	92	---
				TAP 3 (COOL)†	520	91	---	480	94	---	440	97	---	405	100	---	365	103	---
				TAP 4 (HEAT)*	660	151	40	630	156	42	590	159	45	560	162	47	530	162	50
				TAP 5 (HEAT)#	660	151	30	630	156	31	590	159	34	560	162	35	530	162	37
1.5	MGE920-7-11-18NP	25 - 55 (15 - 45)	40 (30)	TAP 1 (FAN)	490	80	---	450	84	---	410	87	---	365	89	---	320	92	---
				TAP 2 (COOL)	660	151	39.98	630	156	41.89	590	159	44.73	560	162	47.12	530	162	49.79
				TAP 3 (COOL)†	710	176	---	680	181	---	645	185	---	615	188	---	585	192	---
				TAP 4 (HEAT)*	425	65	41	380	68	46	340	71	52	290	74	61	---	---	---
				TAP 5 (HEAT)#	425	65	31	380	68	35	340	71	39	290	74	45	---	---	---
	MGE930-7-11-18NP	25 - 55 (15 - 45)	40 (30)	TAP 1 (FAN)	490	80	---	450	84	---	410	87	---	365	89	---	320	92	---
				TAP 2 (COOL)	660	151	39.98	630	156	41.89	590	159	44.73	560	162	47.12	530	162	49.79
				TAP 3 (COOL)†	710	176	---	680	181	---	645	185	---	615	188	---	585	192	---
				TAP 4 (HEAT)*	660	151	40	630	156	42	590	159	45	560	162	47	530	162	50
				TAP 5 (HEAT)#	660	151	30	630	156	31	590	159	34	560	162	35	530	162	37

N/A: Do not operate unit using this blower speed at this external static pressure.

† As shipped speed for Cooling operation. Blower speed must be field adjusted to speed Tap 2 for lower duct static applications.

\* As shipped speed for Low Stage heating operation.

# As shipped speed for High Stage heating operation.

} Airflow for heating is fixed and not field adjustable

SCFM = standard cubic feet per minute

## BLOWER PERFORMANCE CONTINUED

- Performance based on factory-provided washable filter installed in the unit.
- If a higher resistance filter is field installed in the unit, the added resistance must be included in the external static pressure and must not exceed 0.5 in. w.c. including ductwork.
- Refer to Factory Filter Size and Pressure Drop table for additional details.

				SUPPLY AIRFLOW PERFORMANCE AS A FUNCTION OF EXTERNAL STATIC PRESSURE															
Tonnage	Model	Gas Heating		Indoor Blower Speed	0.1" w.c.			0.2" w.c.			0.3" w.c.			0.4" w.c.			0.5" w.c.		
		Rise Range (F°)	Mid Rise (F°)		SCFM	Watts	Temp Rise	SCFM	Watts	Temp Rise	SCFM	Watts	Temp Rise	SCFM	Watts	Temp Rise	SCFM	Watts	Temp Rise
2.0	MGE930-7-11-24NP	25 - 55 (15 - 45)	40 (30)	TAP 1 (FAN)	480	81	---	440	84	---	400	87	---	365	89	---	320	92	---
				TAP 2 (COOL)	815	254	---	785	258	---	760	262	---	735	266	---	705	272	---
				TAP 3 (COOL)†	840	273	---	810	277	---	785	281	---	760	285	---	730	291	---
				TAP 4 (HEAT)*	660	151	40	630	156	42	590	159	45	560	162	47	530	162	50
				TAP 5 (HEAT)#	660	151	30	630	156	31	590	159	34	560	162	35	530	162	37
	MGE940-7-11-24NP	25 - 55 (15 - 45)	40 (30)	TAP 1 (FAN)	480	81	---	440	84	---	400	87	---	365	89	---	320	92	---
				TAP 2 (COOL)	815	254	---	785	258	---	760	262	---	735	266	---	705	272	---
				TAP 3 (COOL)†	840	273	---	810	277	---	785	281	---	760	285	---	730	291	---
				TAP 4 (HEAT)*	795	234	44	760	238	46	735	243	48	710	247	50	680	252	52
				TAP 5 (HEAT)#	795	234	33	760	238	35	735	243	36	710	247	37	680	252	39
	MGE950-7-11-24NP	25 - 55 (20 - 50)	40 (35)	TAP 1 (FAN)	480	81	---	440	84	---	400	87	---	365	89	---	320	92	---
				TAP 2 (COOL)	815	254	---	785	258	---	760	262	---	735	266	---	705	272	---
				TAP 3 (COOL)†	840	273	---	810	277	---	785	281	---	760	285	---	730	291	---
				TAP 4 (HEAT)*	970	387	45	940	386	47	910	385	48	880	384	50	845	383	52
				TAP 5 (HEAT)#	970	387	34	940	386	35	910	385	36	880	384	37	845	383	39

N/A: Do not operate unit using this blower speed at this external static pressure.

† As shipped speed for Cooling operation. Blower speed must be field adjusted to speed Tap 2 for lower duct static applications.

\* As shipped speed for Low Stage heating operation.

# As shipped speed for High Stage heating operation.

} Airflow for heating is fixed and not field adjustable

SCFM = standard cubic feet per minute

## BLOWER PERFORMANCE CONTINUED

- Performance based on factory-provided washable filter installed in the unit.
- If a higher resistance filter is field installed in the unit, the added resistance must be included in the external static pressure and must not exceed 0.5 in. w.c. including ductwork.
- Refer to Factory Filter Size and Pressure Drop table for additional details.

				SUPPLY AIRFLOW PERFORMANCE AS A FUNCTION OF EXTERNAL STATIC PRESSURE															
Tonnage	Model	Gas Heating		Indoor Blower Speed	0.1" w.c.			0.2" w.c.			0.3" w.c.			0.4" w.c.			0.5" w.c.		
		Rise Range (F°)	Mid Rise (F°)		SCFM	Watts	Temp Rise	SCFM	Watts	Temp Rise	SCFM	Watts	Temp Rise	SCFM	Watts	Temp Rise	SCFM	Watts	Temp Rise
2.5	MGE930-7-11-30NP	25 - 55 (15 - 45)	40 (30)	TAP 1 (FAN)	650	145	---	620	147	---	575	151	---	540	154	---	510	158	---
				TAP 2 (COOL)	935	350	---	910	352	---	875	351	---	840	350	---	805	349	---
				TAP 3 (COOL)*†	950	366	---	915	365	---	890	364	---	855	363	---	820	362	---
				TAP 4 (HEAT)*	660	151	40	630	156	42	590	159	45	560	162	47	530	162	50
				TAP 5 (HEAT)#	660	151	30	630	156	31	590	159	34	560	162	35	530	162	37
	MGE940-7-11-30NP	25 - 55 (15 - 45)	40 (30)	TAP 1 (FAN)	650	145	---	620	147	---	575	151	---	540	154	---	510	158	---
				TAP 2 (COOL)	935	350	---	910	352	---	875	351	---	840	350	---	805	349	---
				TAP 3 (COOL)*†	950	366	---	915	365	---	890	364	---	855	363	---	820	362	---
				TAP 4 (HEAT)*	795	234	44	760	238	46	735	243	48	710	247	50	680	252	52
				TAP 5 (HEAT)#	795	234	33	760	238	35	735	243	36	710	247	37	680	252	39
	MGE950-7-11-30NP	25 - 55 (20 - 50)	40 (35)	TAP 1 (FAN)	650	145	---	620	147	---	575	151	---	540	154	---	510	158	---
				TAP 2 (COOL)	935	350	---	910	352	---	875	351	---	840	350	---	805	349	---
				TAP 3 (COOL)*†	950	366	---	915	365	---	890	364	---	855	363	---	820	362	---
				TAP 4 (HEAT)*	970	387	45	940	386	47	910	385	48	880	384	50	845	383	52
				TAP 5 (HEAT)#	970	387	34	940	386	35	910	385	36	880	384	37	845	383	39

N/A: Do not operate unit using this blower speed at this external static pressure.

† As shipped speed for Cooling operation. Blower speed must be field adjusted to speed Tap 2 for lower duct static applications.

\* As shipped speed for Low Stage heating operation.

# As shipped speed for High Stage heating operation.

SCFM = standard cubic feet per minute

} Airflow for heating is fixed and not field adjustable



215 Metropolitan Drive | West Columbia, SC 29170

800-448-5872

Product Support 866-282-7257

www.magic-pak.com

All specifications and illustrations subject to change  
without notice and without incurring obligations.