

# EMAWX

(formerly EMA4X)

**Coils for Manufactured Housing (R-410A refrigerant)  
2, 3, and 4 Tons**

**IN THE U.S. THIS PRODUCT IS FOR SERVICE  
AND WARRANTY ONLY.**



## Product Data

**IMPORTANT:** The EMAWX replaces the EMA4X model in the United States and is only available for service and warranty use.  
In Canada, the EMAWX can be used for new R-410A installations, service, and warranty use.

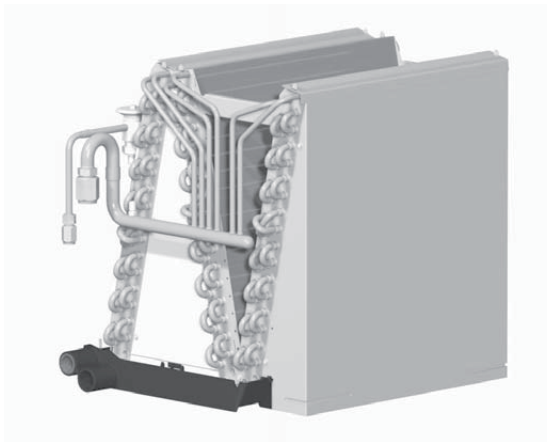


Fig. 1 – EMAWX

A240492

### FEATURES

- Designed for mobile home downflow gas furnaces
- Bolt-on TXV metering device factory installed on all models (equalizer tube brazed in)
- Two condensate drain connections
- “N” evaporator design to keep height at a minimum Shipped with condensate drain hose and trap
- Shipped with fittings and adapter plates
- Aluminum hairpin/return-bend/fin “N” coil with the latest high-tech fin design

### WARRANTY\*

- 5-year parts limited warranty
  - With timely registration, an additional 5 years parts limited warranty
- \* Applies to original purchaser/homeowner; some limitations may apply. See Warranty certificate for complete details.



Use of the AHRI Certified TM Mark indicates a manufacturer's participation in the program. For verification of certification for individual products, go to [www.ahridirectory.org](http://www.ahridirectory.org).



A240493

Model	Size (tons)	Dimensions H x W x D (in.)	Shipping Weight lbs (kg)
EMAWX24DAL	2	12-5/8 x 17-7/8 x 19-9/16	34 (15)
EMAWX36DAL	3	14-11/16 x 17-7/8 x 19-9/16	39 (18)
EMAWX48DAL	4	18-3/4 x 17-7/8 x 19-9/16	45 (20)

UNIT	SERIES	A	SHIPPING WT (LBS)
EMAWX24DAL	1	12 5/8"	34.0
EMAWX36DAL	1	14 11/16"	38.5
EMAWX48DAL	1	18 3/4"	45.0

NOTES:

- SERIES NUMBER IS THE LAST POSITION OF THE UNIT MODEL NUMBER.
- ALL DIMENSIONS ARE IN "INCHES" UNLESS NOTED.

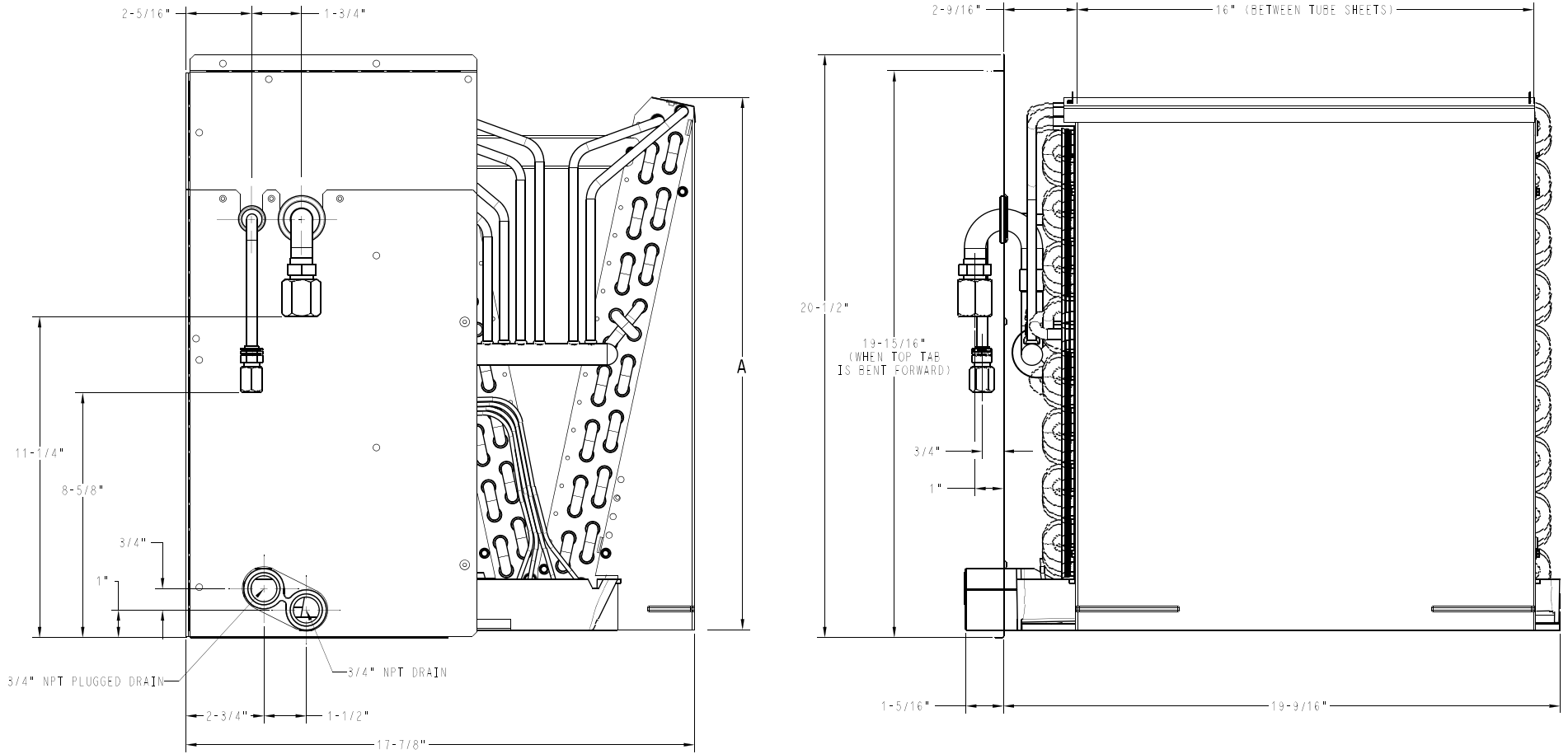


Fig. 2 – EMAWX Dimensional Data (English)

A250016

UNIT	SERIES	A	SHIPPING WT (Kgs)
EMAWX24DAL	1	320.7	15.4
EMAWX36DAL	1	373.1	17.5
EMAWX48DAL	1	476.2	20.4

NOTE:

- SERIES NUMBER IS THE LAST POSITION OF THE UNIT MODEL NUMBER
- ALL DIMENSIONS ARE IN "MM" UNLESS NOTED.

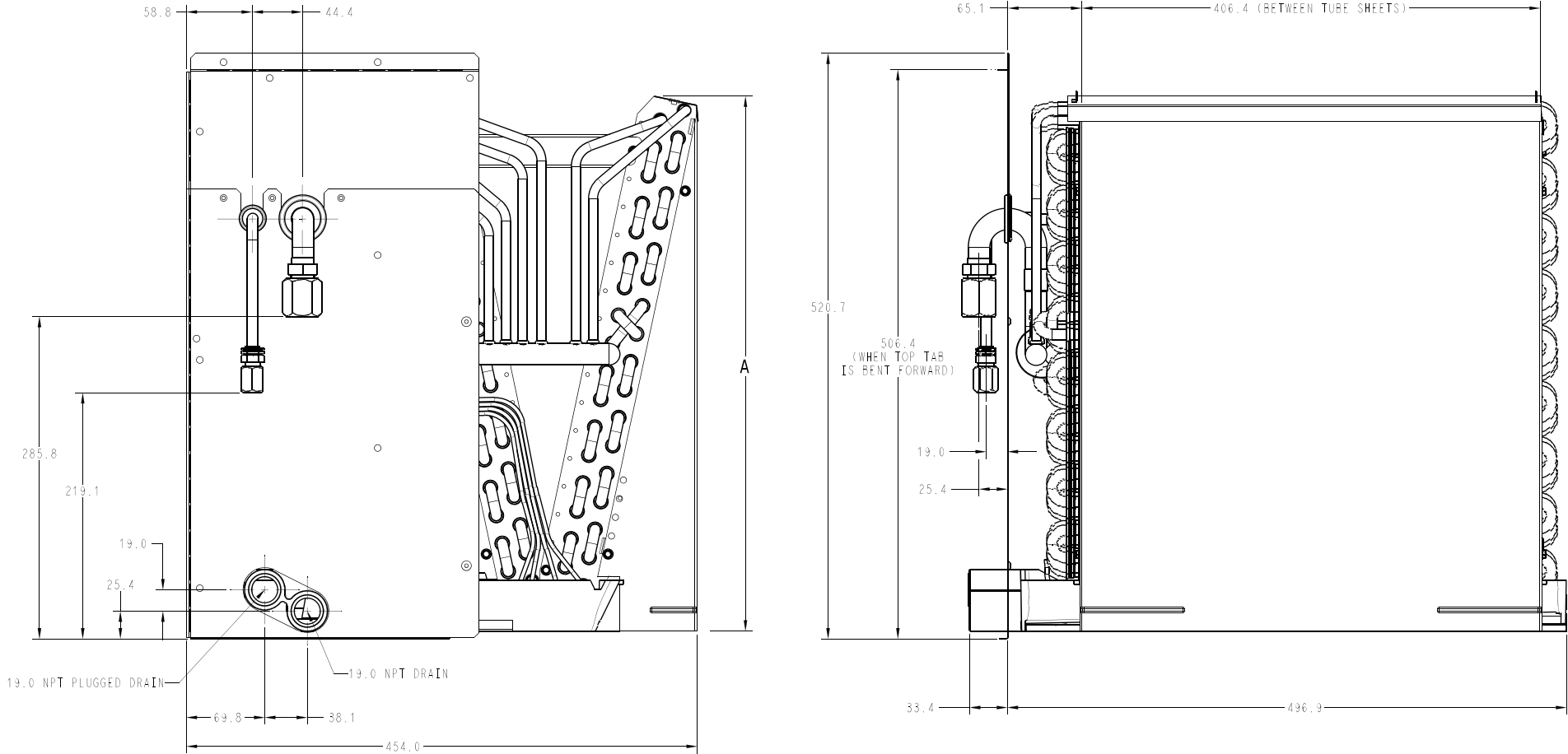


Fig. 3 – EMWX Dimensional Data (Metric)

A250029

Table 1 – Physical Data

	Model Size		
	24	36	48
<b>TXV factory installed; hard shut-off; bi-flow type for heat pump application; non-adjustable superheat.</b>			
R-410A TXV Size	2 ton	3 ton	5 ton
TXV Connections	TXV-to-coil = Bolt-on 3/4–20 UNF straight thread (factory assembled)		
	field line set to TXV = 3/8" (10mm) mechanical coupling		
	equalizer-to-coil = brazed in (factory brazed)		
<b>Nominal Acceptable CFM Range (minimum 350 CFM/ton, maximum 450 CFM/ton)</b>			
CFM (L/s) – min	700 (330)	1050 (496)	1400 (661)
CFM (L/s) – max	900 (425)	1350 (637)	1600* (755)
<b>Coil Data (all coils 3 slab “N” configuration, lanced sine wave bare aluminum fin)</b>			
Face Area ft <sup>2</sup> (m <sup>2</sup> )	4.0 (0.37)	4.7 (0.44)	6.0 (0.56)
Each Slab H x W in.(m)	12 x 16 (305 x 406)	14 x 16 (356 x 406)	18 x 16 (457 x 406)
Fins Per Inch	16	16	16
<b>Refrigerant Line Connections (mechanical coupling)</b>			
Liquid in. (mm)	3/8 (10)	3/8 (10)	3/8 (10)
Suction in. (mm)	5/8 (16)	3/4 (19)	3/4 (19)

\*. Excessive pressure drop above 1600.

Table 2 – Accessories

Description	Part Number
Fossil Fuel Kit	AXWR01DFB
PVC Condensate Trap Kit (box of 50)	EBAC01CTK

Table 3 – CFM and Pressure Drop

Coil Size	CFM Across Coils	Static Pressure Drop Across Coil (inches Water Column)	
		Dry	Wet
24 (2 Ton)	700	0.182	0.214
	800	0.233	0.269
	900	0.290	0.336
36 (3 Ton)	1000	0.189	0.236
	1100	0.221	0.276
	1200	0.259	0.315
	1300	0.299	0.361
	1400	0.341	0.413
48 (4 Ton)	1400	0.322	0.348
	1500	0.366	0.396
	1600	0.413	0.446
	1700	*	*
	1800	*	*

\*. Excessive pressure drop; application not recommended

COIL MODEL NUMBER IDENTIFICATION GUIDE									
	E	M	A	W	X	24	D	AL	1
E = Evaporator		M = Manufactured Home		A = Loose		W = Service Only Coil; R-410A Refrigerant		X = TXV	
		TYPE		APPLICATION		METERING DEVICE			
						NOMINAL CAPACITY			
								WIDTH	
								SALES CODE / FEATURES	
								Engineering Revision	