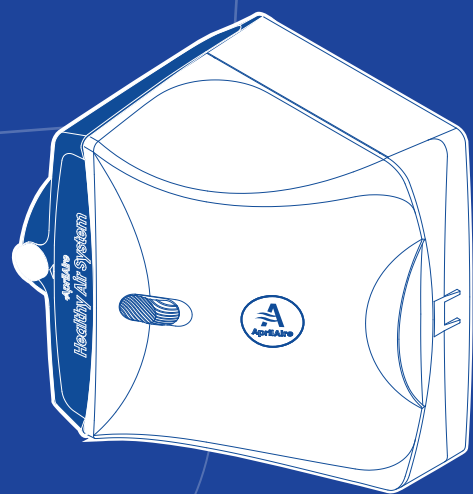


AprilAire

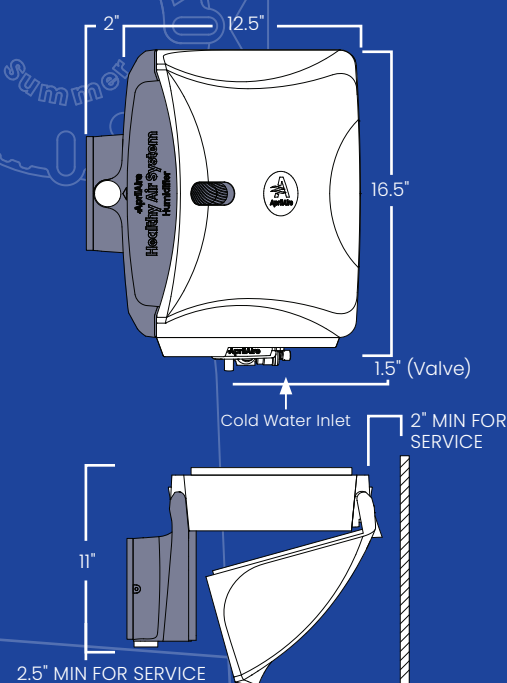
BYPASS LEFT

INSTALLATION TEMPLATE

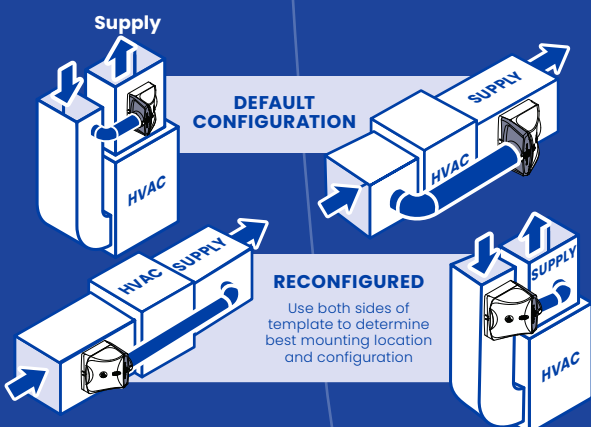


1 DETERMINE LOCATION AND CONFIGURATION

DEFAULT CONFIGURATION



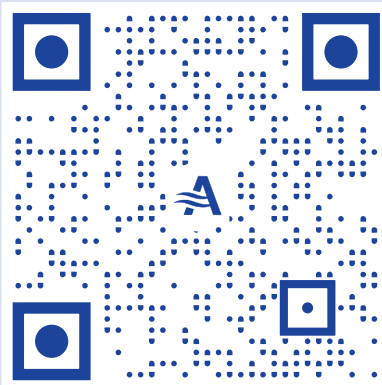
Reconfigure bypass module for right hand bypass duct connections.



*The unit will fit on a 10" drop with the bottom 2 mounting screws omitted.

This humidifier can be installed on either the supply or return plenum. **Humidifier dimensions and accessibility** must be considered when selecting location.

Note: Do not install on systems with **differential pressure greater than 1.0" w.c. across the humidifier.** See reverse side for details.



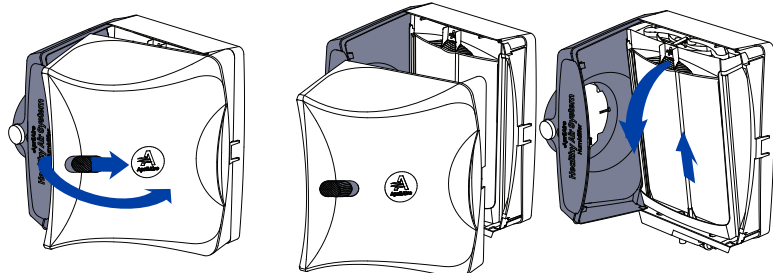
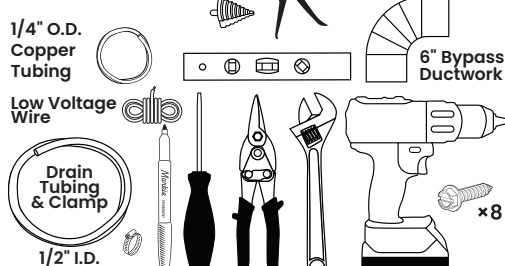
SCAN TO LEARN MORE

2 VERIFY CONTENTS AND PREPARE UNIT FOR INSTALLATION

What's in the box?

- Model 620 Humidifier
- Humidifier Control
- Model L HydroCore™
- Installation Template
- 24 VAC 10 VA Transformer
- Saddle Valve
- Installation Kit (620AK, 620MK, 620AKZ, 620MKZ only)

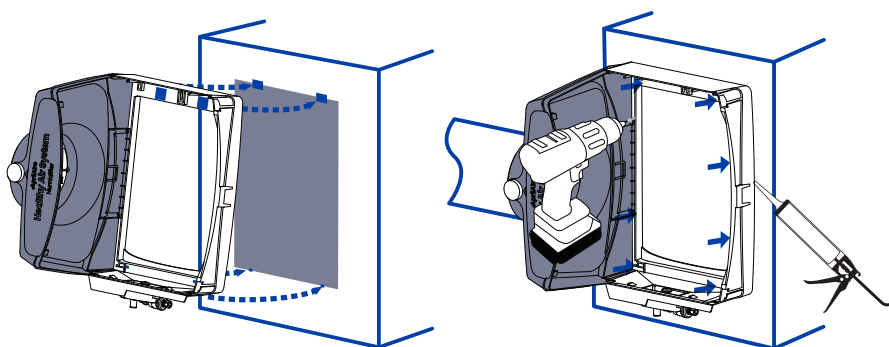
TOOLS NEEDED



- Slide latch to release cover and rotate away from bypass module.
- Remove cover and set aside.
- Tilt HydroCore forward. Remove then set aside.

Note: Need to reconfigure the bypass module for your application?
Flip this template over to continue.

4 MOUNT, SECURE, AND SEAL UNIT



- Angle top of base toward the duct opening and engage hooks.
- Hinge the humidifier toward the opening and slide down to engage bottom hooks.
- Secure unit to plenum using 8 screws. Install 6" bypass ductwork and secure to unit with 2 screws. #8 x 3/4" recommended.
- Seal the edges with caulk to prevent air leaks.

6 CONNECT WATER SUPPLY AND DRAIN LINE

- Install a 1/4" O.D. copper water supply line. Purge water line before connecting to valve inlet using included 1-piece compression fitting. See below for details.
- Install 1/2" I.D. drain hose and secure with a hose clamp. Route to a floor drain or condensate pump. **Ensure constant downward slope.**

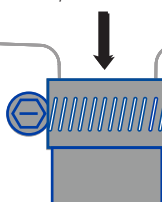
WATER CONDITIONS

- Ensure connections are water tight and adhere to local codes.
- Pressure: 30–120 psi
- **Best Practice: Connect to soft or softened water. Humidifier is effective with hot or cold. Installations on hard water will require more frequent maintenance. A scale-reducing inline water filter is recommended to lessen the effects of hard water.**
- Hot water recommended for maximum evaporative capacity.

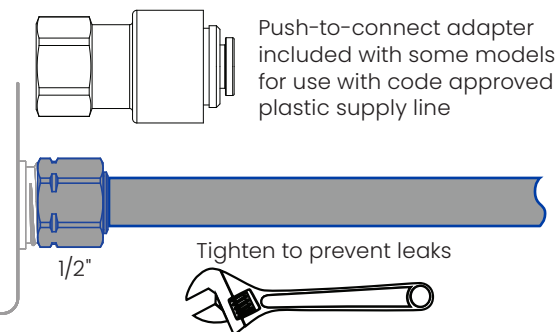


Annual maintenance of your humidifier will prevent buildup of minerals left behind during evaporation. **Scan the QR code at the top of this template to learn more.**

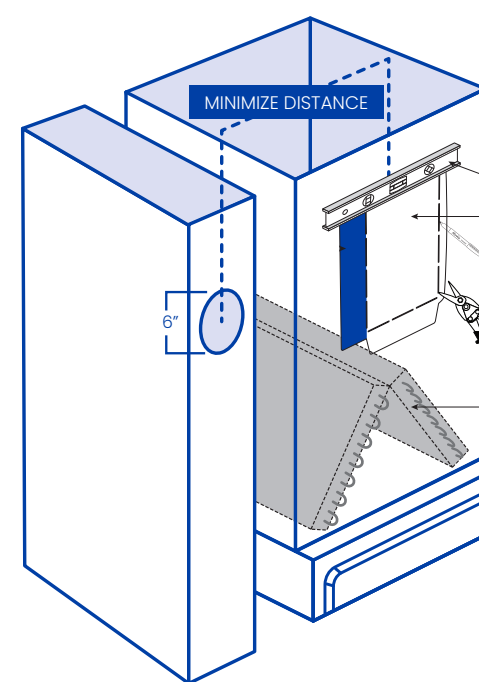
DRAIN LINE
1/2" I.D. hose



Clear, flexible drain tube is recommended. If using hard pipe, 6" minimum of flexible tube is required between the humidifier and pipe for drain cleaning access.



3 DETERMINE LOCATIONS ON DUCTS FOR HUMIDIFIER AND BYPASS, THEN LEVEL, MARK, AND CUT



Important: Consider where water, drain, and electrical connections are when locating the unit.
Soft or softened water is recommended to reduce annual maintenance requirements.

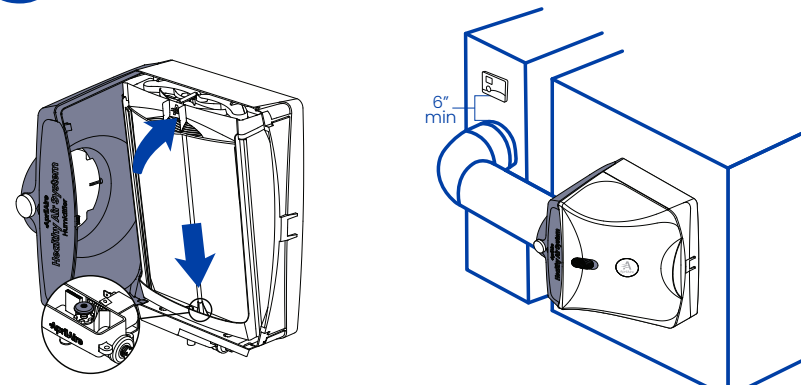
Plenum opening:
10" W x 14 1/4" H

Do not position humidifier in front of blanked off end

⚠ CAUTION / MISE EN GARDE

Do not cut into refrigerant line.
Ne pas couper le tuyau du réfrigérant.

5 INSERT HYDROCORE, REPLACE COVER, AND TURN BYPASS DAMPER TO DESIRED SETTING



- Ensure rubber seal cap is in place on valve orifice. Align HydroCore to valve, then tilt and snap.
- Align cover to outside edge of base and push or pivot into place. Ensure cover is fully latched to avoid air leaks.
- Turn damper knob to WINTER when in use

***Flip template over for damper setting options on higher static pressure systems**

7 CONNECT ELECTRICAL WIRING

The solenoid valve requires a 24 VAC transformer with at least 10VA to operate. Flip template over for wiring details.



NOTICE: Install a condensate pan with float switch or other active leak prevention device when installing in or over a finished space.

TRACE AND CUT PLENUM
ALONG OUTER EDGE OF SLOTS

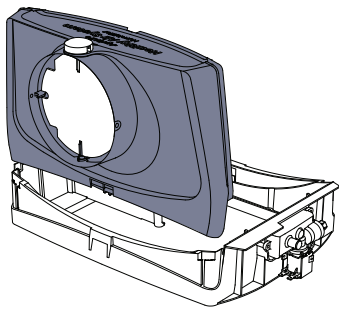
Keep 2" of clearance from
obstructions to access handle.



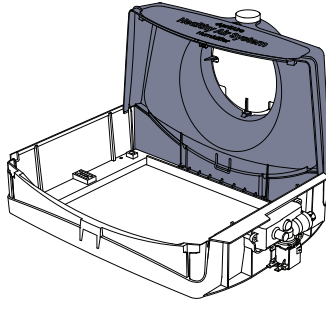
10022058

2 CONTINUED BYPASS RECONFIGURATION

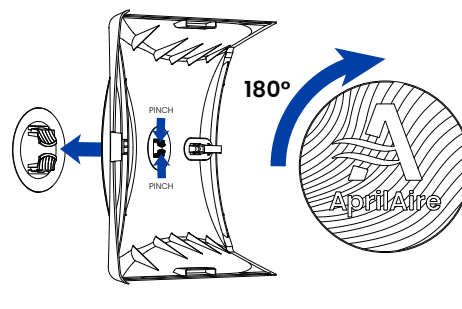
Note: Applicable for right hand bypass duct connections. Turn template over and see step 1 for details.



- d.** Pull bypass module away from base to remove.



- e.** Rotate bypass module 180° and slide back onto base.

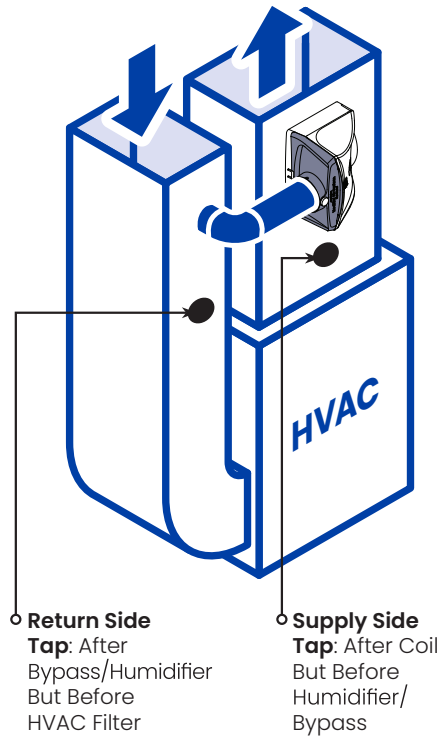


- f.** Remove badge by pressing textured tabs to release. Rotate 180° and reattach to cover. Flip this template over and continue at **STEP 3** on the front.

BYPASS DAMPER SETTINGS

TABLE 1: RECOMMENDED DAMPER SETTING BASED ON MEASURED PRESSURE OR DESIGNED AIRFLOW

	Measured Differential Pressure (" w.c. across humidifier)	Designed Bypass Airflow (CFM)
 Position 1 (As-Shipped)	0-0.3	0-300
 Position 2	0.3-0.6	300-400
 Position 3	0.6-1.0	400+



Installations with high differential pressure can utilize the intermediate damper settings by adjusting the WINTER stop pin position.

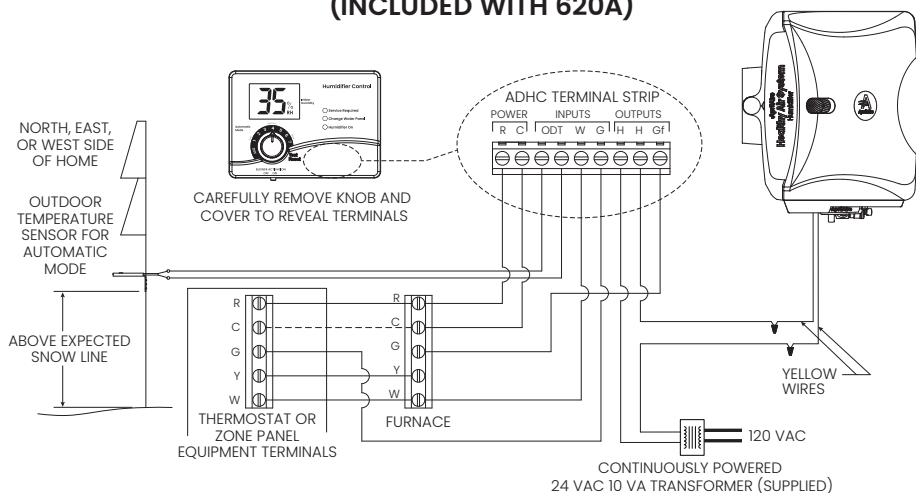
Note: Setting the damper for the correct differential pressure or airflow helps optimize bypass humidifier performance while helping prevent too much recirculated air.

- Measure differential pressure across the humidifier.
 - Create pressure taps at the two locations shown on the diagram to the left. This also applies to horizontal and downflow systems and may differ from total system pressure.
 - Turn bypass knob to WINTER.
 - Make a heat call at the thermostat and use a manometer to measure pressure.
- Set stop pin position based on measured pressure or designed bypass airflow.
 - Use TABLE 1 to determine the correct pin position.
 - If necessary, turn the knob to SUMMER and remove the stop pin by using a small flathead screwdriver to pop it out. Insert in proper position.
 - Turn knob to relevant season setting.

HUMIDIFIER CONTROL INSTALLATION

Solenoid requires 24 VAC to operate. Refer to furnace manufacturer's guidelines if using accessory terminals.

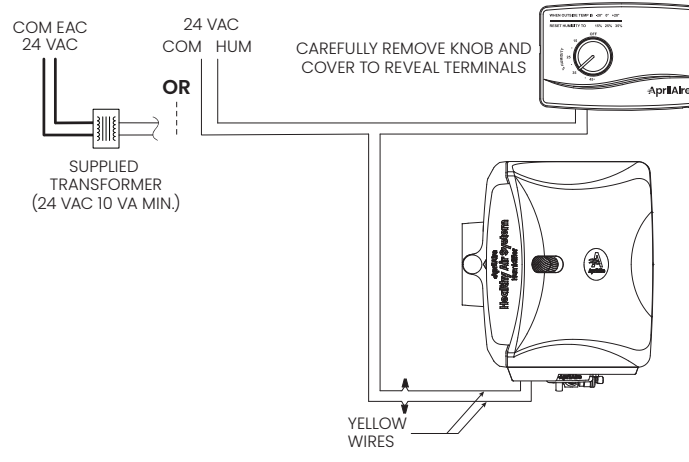
MODEL 60 AUTOMATIC DIGITAL HUMIDIFIER CONTROL (INCLUDED WITH 620A)



Mounting instructions:

- Choose a location on the return plenum at least 6" upstream of the humidifier/bypass duct OR fresh air intake (if applicable).
- Drill a 3/4" hole for the RH sensor that extends from the back of the control.
- Remove the knob and front cover of the control and ensure the sensor gasket is seated tightly around the drilled hole.
- Use 3/4" sheet metal screws to secure the control. Replace cover and knob.

MODEL 4655 MANUAL HUMIDIFIER CONTROL (INCLUDED WITH 620M)



Mounting instructions:

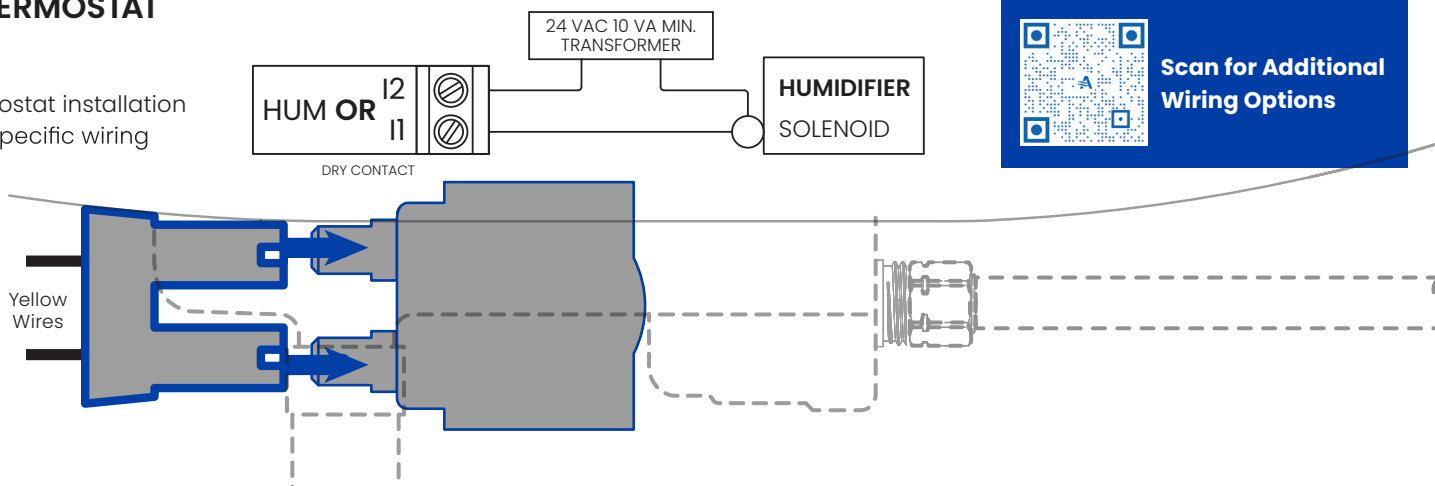
- This control can be mounted on the return plenum or a wall in the living space away from any drafts or heat sources which may skew the temperature.
- Cut a 4-5/32" x 2-7/16" in the selected location.
- Remove knob and cover and use the provided screws and wall anchors (if applicable) to mount the control. Remove the gasket if installing on the wall.
- Replace cover and knob.

APRILAIRE IAQ THERMOSTAT (NOT INCLUDED)

Note: Refer to the thermostat installation instructions for model-specific wiring and setup directions.

SOLENOID WIRE: Unit requires 24 VAC 10 VA min. to operate (**not a dry contact**).

Note: Solenoid valve connection is behind valve cup.



AprilAire

BYPASS RIGHT

INSTALLATION TEMPLATE

INSTALLATION AND TEST CHECKLIST

- ALL PLUMBING CONNECTIONS ARE WATERTIGHT
- BYPASS DAMPER IS IN PROPER POSITION
- HUMIDIFIER FUNCTIONS PROPERLY: SOLENOID VALVE OPENS, WATER FLOWS DOWN DRAIN (APPROX. 5 MINS)
- SET DAMPER POSITION ACCORDING TO DIFFERENTIAL PRESSURE ACROSS HUMIDIFIER



For questions, contact AprilAire Technical Support

800.334.6011 or aprilair.com

10022058A • 08.25

© 2025 AprilAire | aprilair.com | 800.334.6011

AprilAire reserves the right to change specifications without notice.

⚠ WARNING / AVERTISSEMENT

ATTENTION INSTALLER: Improper installation or maintenance may cause property damage or injury. Disconnect electrical power and water before starting installation or service.

ELECTRIC SHOCK HAZARD: 120 volts may cause serious injury from electric shock.

RISK OF SCALDING: Water temperature over 125°F can cause severe burns and scald instantly.

ATTENTION INSTALLATEUR: Une installation ou un entretien inadéquat(e) peut entraîner des dommages matériels ou corporels. Débranchez l'alimentation électrique et coupez l'eau avant de procéder à l'intervention.

RISQUE DE CHOC ÉLECTRIQUE: Une tension de 120 volts peut provoquer des blessures graves par électrocution.

RISQUE DE BRULURES: Une température d'eau supérieure à 52°C (125°F) peut provoquer de graves brûlures et ébouillanter instantanément.

⚠ CAUTION / MISE EN GARDE

SUDDEN OPERATION MAY CAUSE PERSONAL INJURY OR PROPERTY DAMAGE Turn the humidifier control to **OFF** or lowest setting before servicing.

SHARP EDGES MAY CAUSE INJURY FROM CUTS. Gloves and safety glasses recommended.

UNE MISE EN MARCHÉ SOUDAIN PEUT ENTRAÎNER DES BLESSURES OU DES DOMMAGES MATÉRIELS. Mettez la commande de l'humidificateur sur OFF ou sur le réglage le plus bas avant toute intervention.

LES BORDS ACERES PEUVENT CAUSER DES COUPURES GRAVES. Portez toujours des lunettes ou des lunettes de sécurité et des gants durant l'installation de l'unité.