

# High Static Ducted Slim Heat Pump Ductless System

Indoor Model: D5FSDAH18XHK

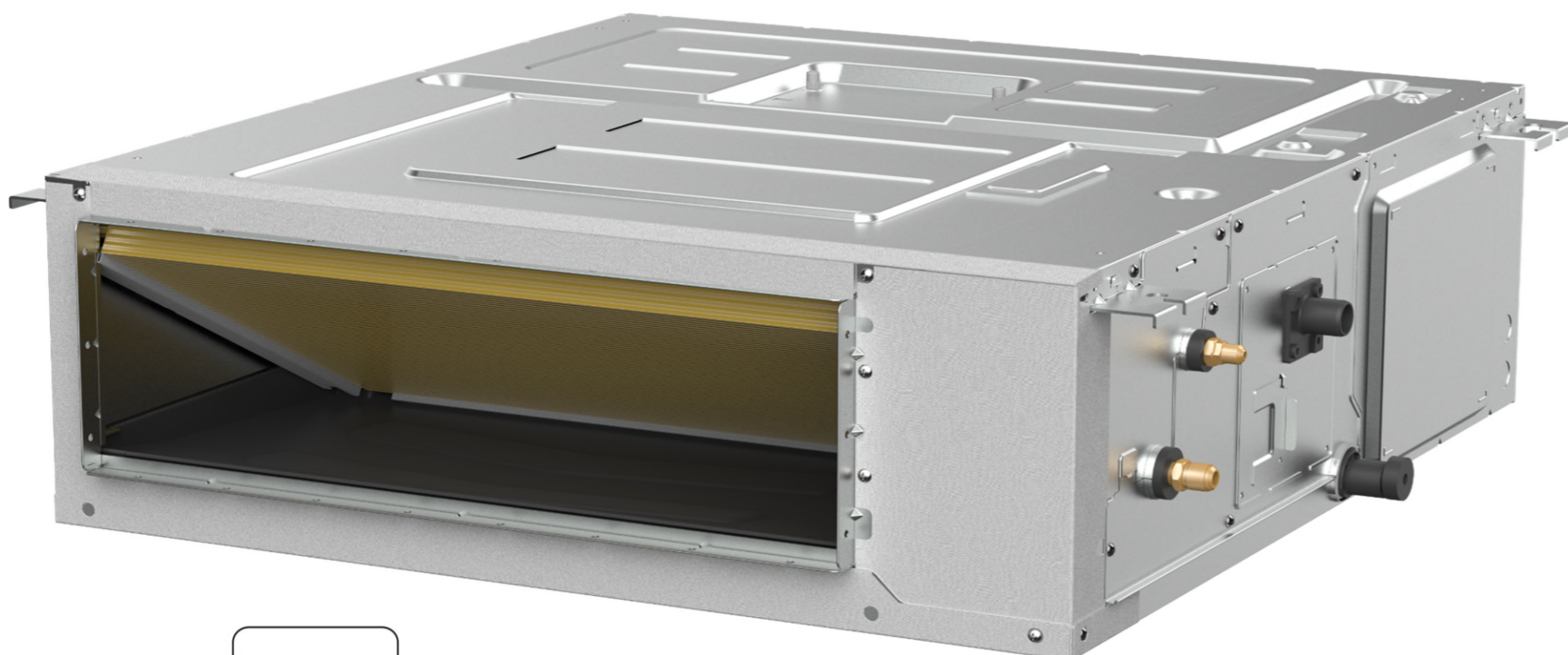
Job Data:

Location:

Tag #:

Carrier#:

Date:



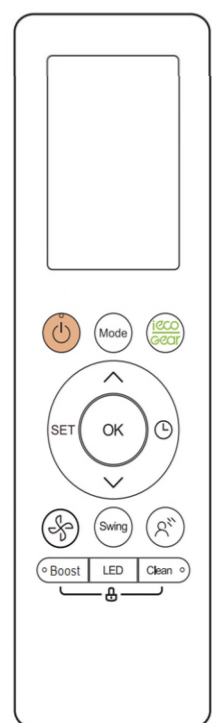
### INDOOR STANDARD FEATURES

- Modes: Cool, Heat, Dry, Fan, Auto
- Vertical or Horizontal Installation
- Rear or Bottom Return
- Outside Air Intake
- Condensate Lift pump shipped with the unit
- Follow Me (senses temperature at handheld remote)
- Auto-Restart function
- Quiet indoor operation
- Anti-corrosive fin coating

### RESIDENTIAL APPLICATION LIMITED WARRANTY\*

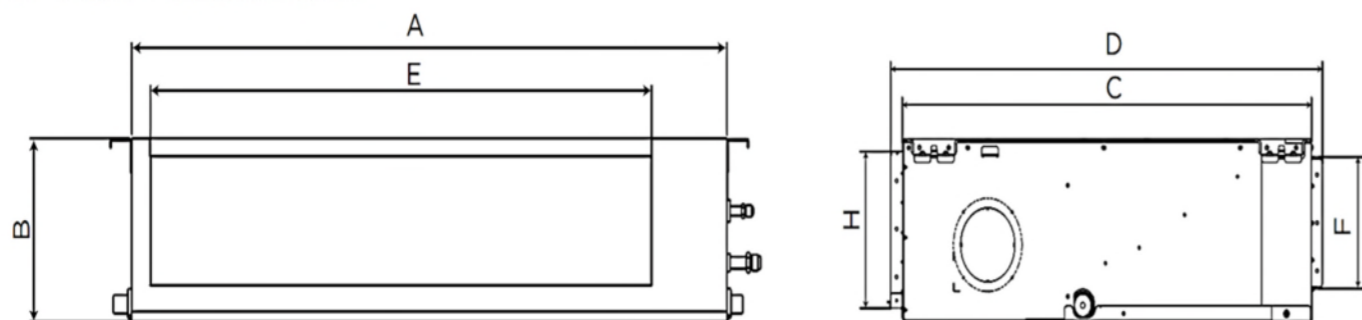
- Ten (10) years if properly registered within ninety (90) days after original installation, parts are warranted to the original purchaser for a period of ten (10) years. Otherwise, parts warranty is five (5) years.

NOTE: Images for illustration purposes only. Actual models may be slightly different.

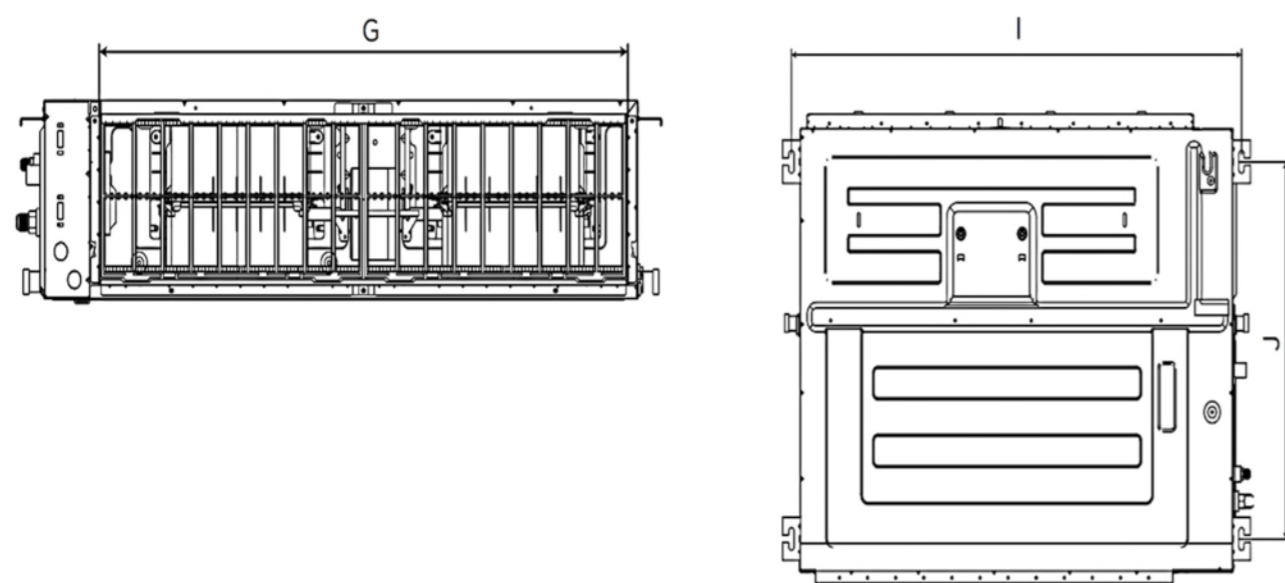


D5FSDAH18XHK			
System	Indoor Model #	D5FSDAH18XHK	
	Indoor Size	18000	
Electrical	Voltage, Phase, Cycle	V/Ph/Hz	208/230-1-60
	Power Supply	Indoor unit powered by outdoor unit	
	MCA	A.	3
Operating Range	Cooling Indoor DB Min - Max	°F(°C)	60~90 (16~32)
	Heating Indoor DB Min - Max	°F(°C)	32~86 (0~30)
Indoor Coil	Face Area	Sq. Ft.	3.12
	No. Rows		3
	Fins per inch		22
	Circuits		9
Indoor Unit	Number of Fan Speeds		820/760/700
	Airflow (highest to lowest)	CFM	706.32 / 618.03 / 529.74 / 441.45 //
	Sound Pressure (highest to lowest)	dB(A)	N/A/36/34.0/32.0/28.0
	Moisture Removal	L/h	NA
	Air Throw Data	ft(m)	NA
Dimensions	Height	in (mm)	9.65(245)
	Width	in (mm)	39.37(1000)
	Depth	in (mm)	29.53(750)
	Net Weight	lbs (kg)	79.81(36.2)
	Shipping Height	in (mm)	11.97(304)
	Shipping Width	in (mm)	48.23(1225)
	Shipping Depth	in (mm)	33.86(860)
	Shipping Net Weight	lbs (kg)	91.27(41.4)
<b>CONTROLS</b>			
Standard	Wireless Remote Controller (°F/°C Convertible)		
	Wired Remote Control 7 Day Programmable	KSACN1401AAA	
Optional	Wired Remote Control with Timer Function	KSACN1201AAA	
	24V Mini Interface	KSAIC0601230	

### Air outlet dimensions



### Air inlet dimensions



INDOOR UNIT DIMENSIONS											
Capacity	Unit	OUTLINE DIMENSION				AIR OUTLET OPENING SIZE		AIR RETURN OPENING SIZE		SIZE OF MOUNTED LUG	
		A	B	C	D	E	F	G	H	I	J
9K/12K	mm	700	245	750	795	527	178	592	212	740	640
	inch	27.6	9.6	29.5	31.3	20.7	7.0	23.3	8.3	29.1	25.2
18K/24K	mm	1000	245	750	795	827	178	892	212	1040	640
	inch	39.4	9.6	29.5	31.3	32.6	7.0	35.1	8.3	40.9	25.2



R-454B