



Submittal Data Sheet

0.75-Ton Wall Mounted Unit

FTX09NMVJURX09NMVJU

FEATURES

- Up to 19 SEER / 12.5 EER / 9.0 HSPF
- High-efficiency inverter driven swing compressor
- Low ambient heating to 5°F / -4°F with optional drain pan heater
- Low ambient cooling capable
- Specialized drain pan design for improved cold climate drainage
- Mold-resistant washable air filter
- Titanium apatite photo catalytic air purification filter
- Vertical auto-swing air flow
- Standby electricity savings mode
- Hot-start function to eliminate start-up drafts
- Powerful (turbo) and Econo mode settings
- Wireless remote with backlit LCD display

BENEFITS

- 10 Year limited parts warranty with online registration
- 5 Year limited parts warranty for commercial applications
- High efficiency cooling and heating operation provides utility bill savings
- Low profile indoor unit with matte white finish
- May qualify for regional utility rebates and incentives
- Compatible with optional Daikin ENVi Wi-Fi capable Smart Control

INDOOR UNIT



OUTDOOR UNIT





Submittal Data Sheet

0.75-Ton Wall Mounted Unit

FTX09NMVJURX09NMVJU

SYSTEM PERFORMANCE

Indoor Unit Model No.	FTX09NMVJU	Indoor Unit Name:	19 SEER HP DUCTLESS ID 3/4 TON
Outdoor Unit Model No.	RX09NMVJU	Outdoor Unit Name:	19 SEER HP DUCTLESS OD 3/4 TON
Rated Cooling Capacity (Btu/hr):	9,000	Rated Cooling Conditions:	Indoor (°F DB/WB): 80 / 67 Ambient (°F DB/WB): 95 / 75
Sensible Capacity (Btu/hr):	9,000	Rated Piping Length(ft):	25
Max/Min Cooling Capacity (Btu/hr):	10,200 / 4,400	Rated Height Difference (ft):	49.00
Cooling Input Power (kW):	0.720	Rated Heating Conditions:	Indoor (°F DB/WB): 70 / 70 Ambient (°F DB/WB): 47 / 43
SEER (Non-Ducted/Ducted):	19.00 /	HSPF (Non-Ducted/Ducted):	9.0 /
EER (Non-Ducted/Ducted):	12.50 /	Heating COP (Non-Ducted/Ducted):	3.7 /
Rated Heating Capacity (Btu/hr):	10,000		
Max/Min Heating Capacity (Btu/hr):	13,000 / 4,400		
Heating Input Power (kW):	0.72		

SYSTEM DETAILS

Refrigerant Type:	R-410A	Cooling Operation Range (°F DB):	50 - 115
Holding Refrigerant Charge (lbs):	1.5	Heating Operation Range (°F WB):	5 - 75
Additional Charge (lb/ft):	0.01	Max. Pipe Length (Vertical) (ft):	
Pre-charge Piping (Length) (ft):	32	Cooling Range w/Baffle (°F DB):	0 - 115
Max. Pipe Length (Total) (ft):	66	Heating Range w/Baffle (°F WB):	-
Max Height Separation (Ind to Ind ft):	49		

Submittal Data Sheet

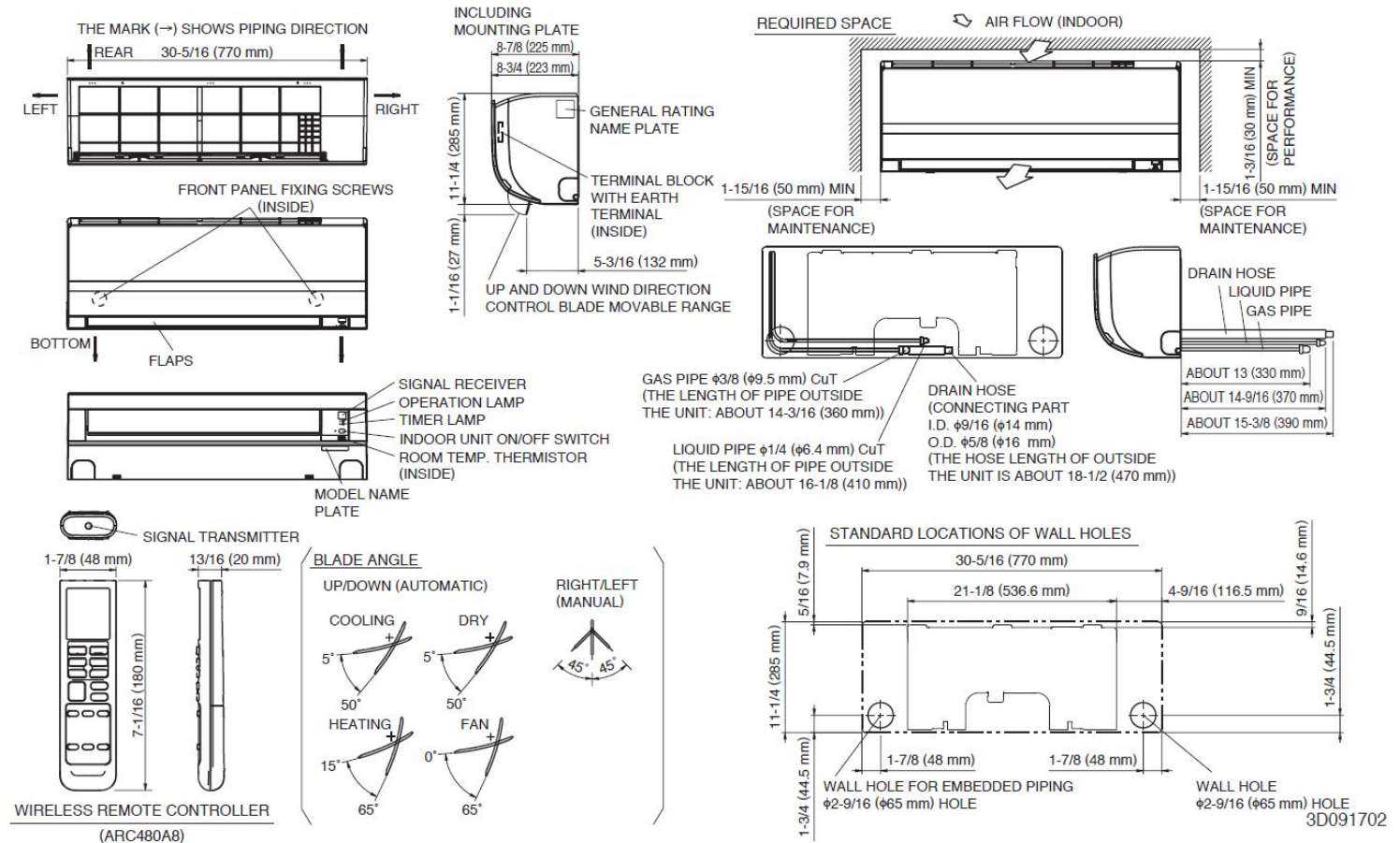
0.75-Ton Wall Mounted Unit

FTX09NMVJURX09NMVJU

INDOOR UNIT DETAILS

Power Supply (V/Hz/Ph):	208-230 / 60 / 1	Airflow Rate (H/M/L/SL) (CFM):	417/297/244/141
Power Supply Connections:	Connects to outdoor unit	Moisture Removal (Gal/hr):	0.3
Min. Circuit Amps MCA (A):	12.10	Gas Pipe Connection (inch):	3/8
Max Overcurrent Protection (MOP) (A):	15.00	Liquid Pipe Connection (inch):	1/4
Dimensions (HxWxD) (in):	11-1/4 x 30-3/8 x 8-3/4	Condensate Connection (inch):	5/8
Panel (HxWxD) (in):		Sound Pressure (H/M/L/SL) (dBA):	43/36/30/19
Net Weight (lb):	18	Sound Power Level (dBA):	
Panel Weight (lb):		Ext. Static Pressure (Rated/Max) (inWg):	/

DIMENSIONAL DRAWING - INDOOR UNIT



Submittal Data Sheet

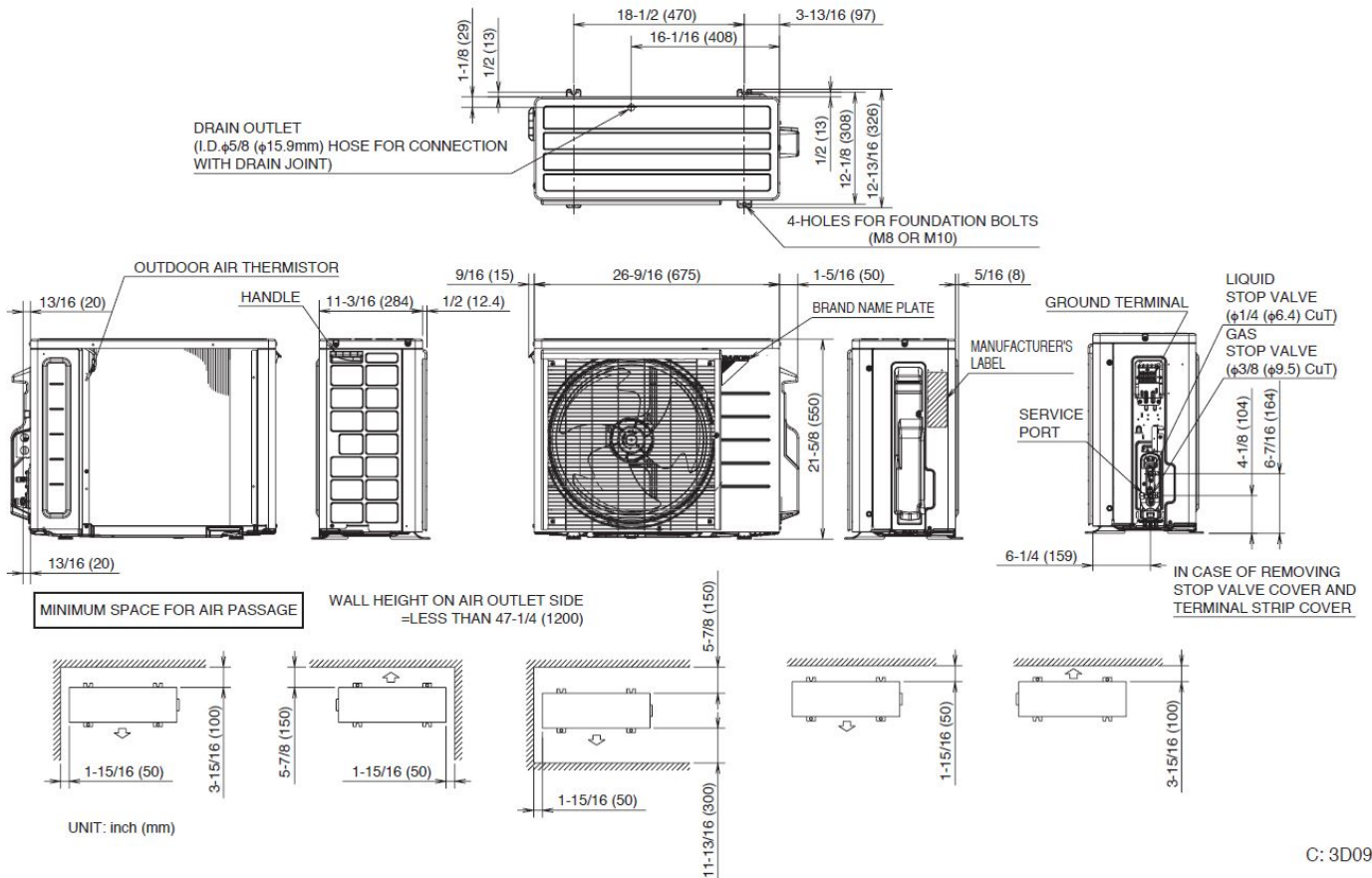
0.75-Ton Wall Mounted Unit

FTX09NMVJURX09NMVJU

OUTDOOR UNIT DETAILS

Power Supply (V/Hz/Ph):	208-230 / 60 / 1	Compressor Type:	Inverter
Power Supply Connections:	L1, L2, Ground	Capacity Control Range (%):	-
Min. Circuit Amps MCA (A):	12.10	Airflow Rate (H) (CFM):	1,102
Max Overcurrent Protection (MOP) (A):	15.00	Gas Pipe Connection (inch):	3/8
Max Starting Current MSC(A):		Liquid Pipe Connection (inch):	1/4
Rated Load Amps RLA(A):	8.5	Sound Pressure (H) (dBA):	46
Dimensions (HxWxD) (in):	21-5/8 x 26-9/16 x 11-3/16	Sound Power Level (dBA):	
Net Weight (lb):	55		

DIMENSIONAL DRAWING - OUTDOOR UNIT



C: 3D092206